



An tSeirbhís Phromhaidh  
The Probation Service

# Annual Report 2013

Reduce re-offending to create safer communities

Probation Service,  
Haymarket,  
Smithfield, Dublin 7.  
Tel: + 353 (0)1 817 3600  
Fax: + 353 (0)1 872 2737

# Index

<b>INTRODUCTION</b>	<b>Page 3</b>
<b>OUR ROLE</b>	<b>Page 4</b>
<b>A SNAPSHOT OF SERVICE WORK IN 2013</b>	<b>Page 7</b>
<b>COMMUNITY SERVICE/COMMUNITY RETURN</b>	<b>Page 11</b>
<b>YOUNG PERSONS PROBATION</b>	<b>Page 13</b>
<b>COMMUNITY PARTNER INITIATIVES</b>	<b>Page 14</b>
<b>RESTORATIVE JUSTICE</b>	<b>Page 16</b>
<b>WORKING IN PARTNERSHIP</b>	<b>Page 20</b>
<b>PERFORMANCE AGAINST TARGETS</b>	<b>Page 24</b>
<b>JOINT PRISON SERVICE/PROBATION SERVICE STRATEGY REPORT</b>	<b>Page 28</b>
<b>CORPORATE AFFAIRS</b>	<b>Page 30</b>
○ <b>Human Resources</b>	<b>Page 30</b>
○ <b>Staff Training and Professional Development</b>	<b>Page 31</b>
○ <b>Customer Service</b>	<b>Page 33</b>
○ <b>Research</b>	<b>Page 34</b>
○ <b>Finance</b>	<b>Page 37</b>
○ <b>Procurement</b>	<b>Page 38</b>
○ <b>Estate and Facilities</b>	<b>Page 38</b>
○ <b>Information</b>	<b>Page 38</b>
○ <b>Information Communications Technology</b>	<b>Page 39</b>
○ <b>Communication</b>	<b>Page 39</b>
○ <b>Health and Safety</b>	<b>Page 39</b>
○ <b>Management Information</b>	<b>Page 40</b>
<b>APPENDICES</b>	
○ <b>Glossary of Terms</b>	<b>Page 42</b>
○ <b>Organisational Chart</b>	<b>Page 44</b>
○ <b>Finance</b>	<b>Page 45</b>
○ <b>Statistics</b>	<b>Page 47</b>
○ <b>Community Based Organisations</b>	<b>Page 60</b>

# Introduction

**I am very pleased to present the Probation Service Annual Report for 2013 to Alan Shatter T.D., Minister for Justice and Equality.**

Probation Service staff work with around 10,000 offenders every day (over 8,000 of these in the community), to reduce reoffending and risk of harm to the public, to help make good the harm done by crime, and to ensure that Court orders are managed effectively and efficiently. Probation staff engage with each individual offender referred to us, and establish a professional relationship with them, aimed at motivating and helping them to make positive changes in their lives, so as to avoid further offending. We also hold offenders to account for their behaviour and challenge any behaviours or attitudes that might signal a return to offending ways. Our annual report sets out the various ways we do this, through a range of interventions and targeted programmes. It also assesses our performance against our key objectives and describes how we worked collaboratively with our partners to contribute to the achievement of the Department of Justice and Equality's goal of a safer and fairer Ireland.

Critical to the work of the Probation Service are our Strategic Alliances with our partners, particularly in the Criminal Justice area, to progress our shared goals. These partners include the Courts Service, the Irish Prison Service, An Garda Síochána, the Parole Board and the Irish Youth Justice Service, as well as other Government Departments, Agencies and Authorities. In addition, we recognise and acknowledge the important role the Community and Voluntary Sector plays - particularly our funded projects - in adding value to the Probation Service's management of offenders.

Our focus on interagency co-operation was evidenced in a number of ways during 2013. During the year, together with the Irish Prison Service, we launched our Joint Strategic Plan, 2013-2015. A

progress report on that Plan is incorporated into both this and the Irish Prison Service annual reports. One significant success in this regard has been the development of the Community Return and Community Support schemes, with the target numbers of participants for 2013 being exceeded, and plans advanced for the expansion of the two schemes. Partnership working with An Garda Síochána was also further developed in a number of ways. The establishment of a co-located National SORAM (Sex Offender Risk Assessment and Management) Office for the management of sex offenders on a multi-agency basis, was a major development. In 2013, a Senior Probation Officer, and a Health Service Executive (HSE) senior social worker, were assigned fulltime to SORAM, which is headed up and hosted by An Garda Síochána, and is also resourced by the Irish Prison Service.

We focused on a number of specific key priority areas during the year, as part of our overall programme to further develop quality services, focused on outcomes and results, measured against our strategic goals. These included new approaches to how we engage and work with women and young people, extending our suite of offender programmes and restorative practice initiatives, and research on and responses to offenders with alcohol and drugs issues. This has also involved improving data collection and research to inform practice, and in many cases, publishing specific strategies and work plans.

I look forward to continuing to deliver on our Strategic goals in 2014 and to our continued partnership working towards the achievement of safer and fairer communities.



**Vivian Geiran**  
Director



# Our Role

The Probation Service is an agency of the Department of Justice and Equality committed to working to achieve the high level objectives and policy goals of the Department in working for safer communities. The Service works closely with the Courts Service, the Irish Prison Service (IPS), An Garda Síochána, the Irish Youth Justice Service (IYJS), the Parole Board and many organisations in the community. Our role is to contribute to public safety by the management of community sanctions and measures, the effective assessment and management of offenders and by facilitating the re-integration of ex-offenders.

We are the lead agency in the assessment and management of offenders in our community. We play an important role in helping to reduce the level of crime by challenging offender behaviour and working with offenders to change their behaviour and make good the harm done by offending. Our goal is to provide quality assessment and robust management of offenders using the best evidence based probation practice and meeting the highest standards of efficiency and accountability.

The Probation Service provides probation supervision, community service, community return, offending behaviour programmes and specialist support services, to both adult and young offenders. We also work in prisons and places of detention to rehabilitate offenders and facilitate re-integration.

The work of the Probation Service broadly falls into two categories, offender assessment and offender supervision and management. Probation Officers provide offender assessment reports to court and to the Department of Justice and Equality, the IPS, the Parole Board and other appropriate bodies as required. The Service also supervises and manages offenders in the community on behalf of the Courts and the Department of Justice and Equality.

## **The principal areas in which the Probation Service delivers services are:**

1. Offender Supervision and Sentence Management;
2. Community Service and Community Return;
3. Young Persons Probation (YPP);
4. Community Partner Initiatives, (Community Based Organisations in receipt of funding).

## **STATUTORY FUNCTION**

The Probation of Offenders Act (1907) provides for statutory supervision of offenders in the community and is the foundation for probation work in Ireland. We become involved in the criminal justice process between the trial and sanction/sentencing phases, often in cases where a court requires a pre-sanction assessment to assist in deciding on an appropriate sanction. In some cases, the court may be considering placing an offender on probation supervision or community service.

**Other relevant legislation is listed below:**

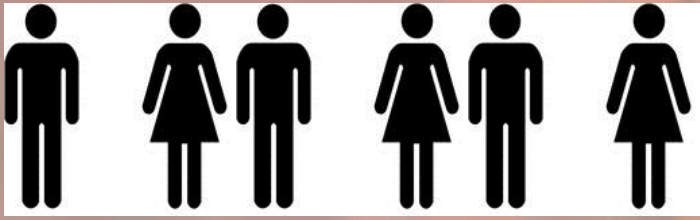
- Criminal Justice (Community Service) (Amendment) Act 2011 [No 24]
- Criminal Justice (Public Order) Act 2011 [No.5] (Begging)
- Criminal Justice (Psychoactive Substances) Act 2010 [No 22]
- Fines Act 2010
- Criminal Justice Act 2007 [No. 29] Part 3 Sentencing.
- Criminal Justice Act 2006 [No. 26] Part 7 *Organised Crime*, Part 8 *Misuse of Drugs* and Part 10 *Sentencing*
- Criminal Justice (Temporary Release of Prisoners) Act 2003
- Children Act 2001(as amended)
- Sex Offenders Act 2001
- Freedom of Information Act 1997 and Freedom of Information (Amendment) Act 2003
- Data Protection Act 1988 and Data Protection (Amendment) Act 2003
- Transfer of Sentenced Persons Act 1995 & 1997
- Criminal Justice Act 1993
- Criminal Justice (Community Service) Act 1983 (as amended)
- Misuse of Drugs Act 1977 ( as amended)
- Criminal Justice Act 1960 (as amended)
- Criminal Justice (Administration) Act 1914
- Probation of Offenders Act 1907

In addition to the Constitution and relevant legislation our practice is guided by:

- The United Nations Rules on Supervised Community Sanctions
- The Council of Europe: European Rules on Community Sanctions and Measures
- The United Nations Rules on the Supervision of Young Offenders
- The Code of Ethics of the Irish Association of Social Workers and International Federation of Social Workers
- Recommendation CM/Rec (2010) 1 of the Committee of Ministers to member states on the Council of Europe Probation Rules
- Framework Decision 2008/947/JHA on the mutual recognition of probation measures

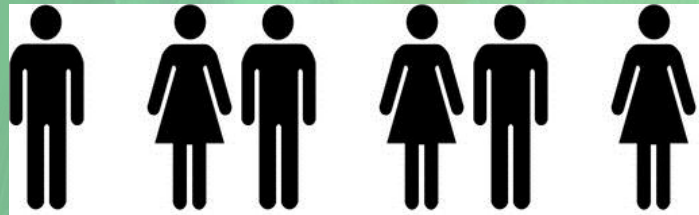






15, 984 Offenders Supervised  
in the Community in 2013

8,705 Court referrals to the  
Service in 2013



# A Snapshot of Service work in 2013

## INTRODUCTION

**Our work with offenders is designed to reduce reoffending, promote positive change in offending behaviour and enable re-integration into communities. We aim to reduce the risk of reoffending and harmful behaviour through quality assessment and effective supervision using a range of innovative and evidence led interventions.**

In 2013 the Service continued to explore and prioritise the range of formats of assessment reports for the courts. There was continued focus on the way we do our work in order to optimise staff performance and continue to deliver and improve our frontline service.

### 1. Review of Assessment Team arrangements:

During the year the Service undertook a review of the dedicated Assessment Teams in Dublin and Cork, resulting in the implementation of revised arrangements, including the amalgamation of two Dublin based assessment teams and the extension of the court liaison team and Service presence in the Courts of Criminal Justice.

A number of key areas were examined in the review including efficiency in meeting the demands of the Courts, as well as the extent to which this approach facilitates and translates into effective supervision practice.

The review confirmed that the separation of assessment and supervision functions, where numbers permit, allows the assessment teams to focus on writing high quality professional reports with a clear priority for supervision teams in planning and delivering individual and group interventions.

### 2. Programme Delivery:

Rehabilitating offenders to achieve and maintain positive change is at the core of our work and informs the interventions undertaken by Probation Officers. We continued to work in partnership with the Bridge Project to deliver on one of our key indicators in expanding the range and type of innovative and evidence led interventions. The revised focus for the Bridge project, in relation to the development of a Programme Delivery Unit, resulted in the development of an effective model of service delivery for both group and individual programmes. The model was designed, tested and applied during the year with the Choice and Challenge group programme, (Dublin). The individual Choice and Challenge programme as well as an anger management programme (I-MAP) were also piloted nationally.

### 3. Same Day Probation Service Assessment:

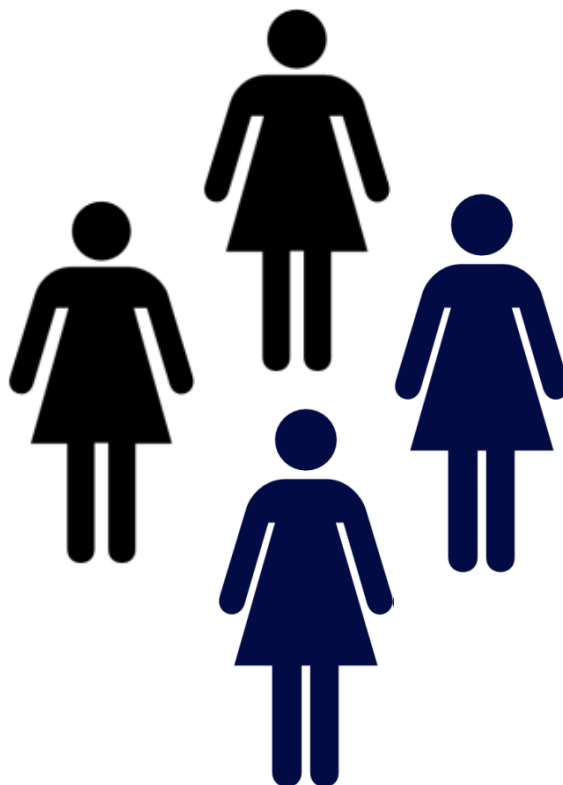
The same day Probation Service Assessment initiative was extended to the Midlands Circuit Court and to Courts in Cork. In addition Short Turnaround Assessment Reports (48 hour) reports were made available to the Criminal Courts of Justice. In total **850** same day Community Service Reports were completed in 2013, contributing to the delivery of 'swifter justice'.



#### 4. Women Offenders:

During the year the Service continued to provide responsive professional approaches to specific offender groups, such as women and young persons (YPP). The Service recognises that many women offenders have complex specific needs which impact on offending. The rehabilitation and reintegration of women offenders requires a holistic approach, best delivered through a coordinated multi agency approach ensuring that women offenders can be effectively managed in the community.

In 2013, a dedicated approach to working with women offenders was piloted in some areas and several programmes tailored for women with a history of offending were initiated and delivered e.g. Anchor Programme delivered in Tallaght. Work has begun on placing women on 'female friendly' community service and community return sites. The Service intends to build on these initiatives on a phased basis in conjunction with the IPS, thereby enhancing the effectiveness and range of community options available for women offenders.



***On any day the  
Probation Service  
is working with  
almost 1,300  
women offenders  
in the community***

## 5. Management of Sex Offenders

The Service worked with 211 sex offenders in the community during 2013. This category of offender, while representing less than 2% of the Service caseload, requires a co-ordinated multi agency approach in order to ensure risks of reoffending are effectively monitored and managed.

During the year a, National SORAM Office was established comprising of staff from the Probation Service, An Garda Síochána and Child and Family Agency (HSE), on a full time basis. This has built on positive relationships with An Garda Síochána and the Health Service Executive (HSE) and the further development of SORAM nationally with a co-located unit in the National Bureau of Criminal Investigation.

The Sex Offender Risk Assessment and Management (SORAM) model, a structured system for sharing information and expertise on those offenders subject both to the supervision requirements of the Courts, and Garda notification under the legislation is managed on this multi-agency basis.

Identified operational and policy matters in the supervision and management of sex offenders, are addressed by the National SORAM Office, in conjunction with the National Steering Committee and where required their respective organisations.

The Irish Prison Service has also become involved in the SORAM model and has representation at the National Steering Committee level. This has facilitated further developments in relation to the management of sex offender's transition from custody to the community.

### **SAFER LIVES PROGRAMME:**

Established in 2012 the Safer Lives Programme has been well utilised in the past year. This intensive sex offender treatment programme, run and co-facilitated in partnership with a community based organisation, runs three group work programmes on a rolling basis, two in Dublin and one in Cork.

Referral assessments, screening interviews and full assessments ensure the most appropriate men are placed on the programme. The assessment process is designed to enhance motivation and overcome obstacles to the men's participation.

***In 2013 the  
Probation Service  
Supervised 211  
sex offenders in  
the community.***

**Community Service**

**Community Return**



# Community Service/Community Return

**Community Service is a sanction used by the courts, in lieu of a prison sentence, whereby, convicted offenders over 16 years of age may be given the opportunity by the court to perform between 40 and 240 hours of unpaid work for the community. Our priority in 2013 was to continue the provision of excellent service to communities, to expand our range of placements while concentrating on the enforcement of orders of the Courts.**

Community Service participants completed a wide variety of work activities during 2013. Many of these activities offered opportunities to learn new skills. Where persons on a Community Service Order expressed an interest in further training or employment opportunities for referral to a Training and Employment Officer (TEO) were provided.

**In the Cork area the Service works with over 30 organisations in the community in the management of community service and community return.**

During the year the Minister for Justice and Equality along with the Director of the Probation Service launched two new custom-designed and purpose built buses for Dublin and Cork graffiti removal project as part of Community Service and Community Return. This work is undertaken in co-operation with Local Authorities.

**Community Return is a joint Probation and Prison Service initiative whereby carefully selected prisoners are granted reviewable temporary release conditional on them performing unpaid community work. Currently the participants must be serving sentences of between 1 and 8 years and must have served at least half of their sentence.**

The scheme saw a significant expansion during 2013 with numbers placed increasing to 396 as compared to 299 during 2012. In the time period from when the scheme was introduced (October 2011) until year end a total of 548 clients have successfully completed their involvement with the programme. Compliance rates continue to operate at about 90% with the remainder being returned to custody to serve out their sentences in full.

The scheme forms a core element of the Joint Irish Prison Service & Probation Service Strategic Plan 2013 - 2015 and has been a really positive development. As well as allowing prisoners to complete their sentence by way of performing a service to the community it has significantly helped these prisoners to successfully reintegrate back into their communities.

The scheme, managed by a co-located Irish Prison Service - Probation Service Unit, is delivering tangible benefits for the State in that suitable persons are being identified for early release with consequent savings in prison spaces and a move away from releasing prisoners in an unstructured manner.

## Community Service, Arklow awarded the Alfie Kennedy Memorial Trophy



Pictured above: Community Service Supervisor William O' Neill

On the 15th September 2013, the Arklow Tidy Towns Committee presented the local Probation Service Community Service project with a civic award, "The Alfie Kennedy Memorial Trophy" in recognition of the contribution made by the project to the local community. The award was presented by Thomas Annesley, Chairman of Arklow Tidy Towns Committee and Lord Mayor of Arklow.

The Community Service project commenced in May 2013 and was hosted by Arklow Town Council. The work involved the development of new garden areas, one of which was a large ocean ship and, maintaining old gardens including an old pitch and putt arena which had been neglected for some time. The

project was co-ordinated under the stewardship of Community Service Supervisor William O' Neill who, along with other Probation Service staff from the Arklow and Bray teams, developed the schedule of work over the summer months.

On 16th September 2013 there were smiles all round, as local Community Service participants heard the news of this marvellous achievement. Most of the Community Service clients are from the Arklow area which added to the great sense of pride in winning the award and in giving something back to their town.

This achievement demonstrates the value in high quality work projects where Community Service participants can see they are making a real and meaningful contribution to their local communities.

The table below details some of the work carried out by Community Service during the year.

- |   |  |
|---|--|
| <ul style="list-style-type: none"> <li>• Graffiti removal, utilising specialist equipment, in co-operation with Local Authorities.</li> </ul>                         | <ul style="list-style-type: none"> <li>• Painting/decorating/cleaning/grounds maintenance in schools and churches and community centres.</li> </ul>  |
| <ul style="list-style-type: none"> <li>• Working on a horticultural project producing fruit and vegetables for voluntary groups</li> </ul>                            | <ul style="list-style-type: none"> <li>• Environmental cleaning and landscaping with the Tidy Towns.</li> </ul>  |
| <ul style="list-style-type: none"> <li>• Repair/recycling of medical equipment, such as crutches, walking aids in association with the HSE.</li> </ul>                | <ul style="list-style-type: none"> <li>• Landscaping and grounds maintenance in estates and parklands in association with County Councils. Cemetery maintenance, grass cutting, strimming, weeding and litter collection.</li> </ul> |
| <ul style="list-style-type: none"> <li>• Special maintenance support to the homeless sector including De Paul trust, Focus Ireland and the Salvation Army.</li> </ul> | <ul style="list-style-type: none"> <li>• Meals on Wheels and food preparation in association with charitable organisations.</li> </ul>   |



# Young Persons Probation

**Young Persons Probation (YPP) is a specialised division of the Probation Service established to work with children and young people aged 12-18 years who come before the Courts or who are in the Children Detention Schools/Centres.**

During 2013, the Young Persons Probation division has continued to apply an evidence based, holistic and interagency approach in the assessment and supervision of young people who were referred by the Children Courts under the Children Act 2001 Restatement. The continuum of interventions ranged from the provision of family conferences to task and therapeutic oriented community supervision to through and aftercare engagement with children who have been in detention.

Work with young offenders was underpinned by the key principles of diversion, restoration and collaboration.

## *The number of Family Conferences undertaken doubled in 2013*

In conjunction with community funded projects and other partner organisations, a range of parenting and 'Strengthening Families' programmes were provided to support meaningful change in family systems

and to both model and inform patterns of pro- social behaviour.

A 'Non Violent Resistance' programme which addresses issues of child to parent violence was piloted in Limerick with very positive feedback from participants.

YPP staff have continued to build on the training which they received on restorative practice by the engagement of young people in victim awareness work and restorative actions in the community.

The Service contributed to the development of the Youth Justice Action Plan 2014-2018 with a particular focus on actions relating to research on substance misuse, the implementation and on-going review of protocols for the management of children in detention, effective interventions and the delivery of restorative practice training on an interagency basis.

### Interventions with Young People

- Support and Advocacy
- Personal Development and Self Efficacy
- Counselling
- Education and Vocational Skills Development.
- Substance Misuse Awareness
- Mentoring
- Parent Mentoring
- Leisure Activities
- Restorative Interventions



# Community Partner Initiatives

**During 2013, the Department of Justice and Equality, through the Probation Service and the Irish Youth Justice Service, provided funding to 45 adult and 16 young persons' Community Based Organisations (CBOs) whose objectives are strategically aligned to the objectives of the Probation Service and support the Probation Service in enhancing public safety and breaking the cycle of crime.**

The CBOs provide a range of services to offenders to support the Probation Service in addressing offender behaviour and facilitating the reintegration of offenders into their community. These services include training and education, offender management programmes, residential accommodation and drug/alcohol abuse treatment programmes.

The YPP CBOs provide a range of services which address the specific needs of young persons who have come into conflict with the law such as, mentoring and strengthening families support programmes.

In accordance with the Probation Service objective of actively encouraging volunteers to contribute to the work of the CBOs, Volunteer Ireland provided training to CBOs in best practice in volunteer management.

CBOs also support the Probation Service in the delivery of Community Service and Community Return. Tivoli Training Centre Dun Laoghaire Co. Dublin operates a recycling project in partnership with the HSE Community Services and St Michaels Hospital. The project provides an opportunity for Community Returns/Service Clients to make reparation to the community through the recycling of patient devices and aids. This resulted in savings of €64,000 to the HSE in 2013.

In support of the Probation Service Joint Strategy with the Irish Prison Service, Cork Alliance CBO provides the UCAS programme. This programme is aimed at prisoners who are serving sentences of 3-12 months in Cork prison. The programme offers a short term practical intervention linking those availing of the early/ temporary release programmes to services and service providers in Cork. Cork Alliance Centre, CBO celebrated ten years of success by hosting a conference titled the Journey to Desistance in 2013.

Two CBOs, Restorative Justice Services and the Nenagh Community Reparation Programme, support the Probation Service in the provision to the courts of restorative justice interventions as an alternative to custody. In 2013 these two CBOs dealt with in excess of 445 restorative cases. Additional funding was secured in 2013 to further expand the provision of restorative justice services in line with the Probation Service Strategy on Restorative Justice

In 2013, Treo, which is a Probation Service funded CBO based in Waterford supporting the work of the Probation Service by providing a range of programmes designed to assist offenders in making positive lifestyle choices was awarded the *All Island Pride of Place Special Award*.

**TREO** received one of only two special awards given in the cities competition. The judges said the award was given *“in respect of an amazing project which involves helping a vulnerable group of young adults by confidence building, meaningful activity, work and engagement. It has had a major impact on its target group. Apart from the training and development of this vulnerable cohort the project also involves family members. This approach, towards helping the families of the group gain confidence and understanding had, a huge impact on the judges as did the leadership of the project and the level of innovation, care and compassion demonstrated”*.



**Pictured above:** Representatives of TREO (Port Lairge) receiving the All Ireland Pride of Place award at a ceremony in Derry.

***In 2013 the  
Restorative Justice  
Services and the  
Nenagh  
Community  
Reparation  
Programmes dealt  
with 445  
restorative cases***

# Restorative Justice

Restorative practice has been a part of probation work for many years. In our work in assessing and supervising offenders, we incorporate measures to increase victim awareness and empathy, as well as offender accountability. This work includes specific elements of reparation and restoration such as Community Service, victim impact assessment reports completed for Courts, as well as family conferences, victim-offender mediation and community-based restorative panels.



In 2013 the Probation Service strategy on Restorative Justice was published - "Repairing the harm: A Victim Sensitive Response to Offending." This strategy provides a framework

for informed, effective and integrated Restorative Justice practice in the Probation Service. The strategy also builds on our achievements to date and focuses on the development of evidence informed interventions. These engage victims, offenders and the community in addressing the consequences of crime while balancing the respective needs of each.



Following a comprehensive review in 2012, the Restorative Justice Service (RJS) project in Dublin expanded services to the Criminal Courts of Justice, in addition to processing referrals from all District Courts in the Greater Dublin area. Nenagh Community Reparation project extended its service to North Tipperary as well as to courts in Offaly with plans to extend to Cork in 2014 and has

commenced operation under its new name "Restorative Justice in the Community" (RJC).



Additional funding was provided to both projects to enable additional resources ensuring an increase of referrals being managed through the projects.

To coincide with Restorative Justice week in November 2013 two conferences were held to support and inform the wider implementation of Restorative Practice. The 3<sup>rd</sup> annual Le Chéile Restorative Justice Conference "Inspiring Innovation" brought together community, statutory and voluntary groups committed to embedding restorative practice. The "Restorative Connections Conference; Developing a Roadmap across Ireland", a North/ South initiative was formally opened by Alan Shatter, T.D., Minister for Justice and Equality and Mr David Ford, MLA, Northern Ireland Minister for Justice and was co-hosted by The Probation Service and the Youth Justice Agency in Northern Ireland. The conference provided a range of interagency workshops, expanding networks, sharing learning and identifying actions to further expand restorative practice.

## **ENGAGEMENT WITH VICTIMS:**

The Probation Service continued to honour its commitments to victims as outlined in the Victims Charter (Victims Charter and Guide to the Criminal Justice System 2010). The Victim Services Co-ordinator informed and monitored the timely and sensitive response by the Probation Service to questions or clarifications from those who had been affected by crime.

Victim concerns are central to our engagement with offenders – in pre-sentence reports, individual supervision plans, group work programmes and in all risk management work.

## *The Service provided 59 Victim Impact Reports during 2013.*

Two training days were provided to staff focusing on the Victims Charter, victim awareness and the preparation of victim impact reports.

### **PROBATION SERVICE INVOLVEMENT WITH THE NATIONAL OFFICE FOR THE PREVENTION OF DOMESTIC, SEXUAL AND GENDER-BASED VIOLENCE:**

Through its representation on the National Steering Committee, the Probation Service has continued to support the implementation

of the National Strategy on Domestic, Sexual and Gender Based Violence 2010 – 2014.

Throughout 2013 the Probation Service has supported and contributed to the establishment of systems and protocols for enhanced interagency cooperation.

This included the assignment of a Senior Probation Officer to the co-located, interagency team which is responsible for the oversight and management of the Sex Offender Risk Assessment and Management Model on a national basis.

Training sessions on the application of risk assessment instruments were delivered with the Irish Prison Service and the Garda Síochána in October and November.

Draft protocols for enhanced working arrangements between An Garda Síochána and the Probation Service were produced in relation to the management of risk and the needs of victims in a domestic violence context.

In addition to one to one work with perpetrators of domestic and sexual violence, we continued to work with partners in the delivery of the North Eastern Domestic Violence Programme 'Men Overcoming Domestic Violence' and the 'Safer Lives' programmes in Cork and Dublin which works with offenders convicted of sexual violence.

# Case Study

## Being on Probation: Michael's Story



Michael\*, (17 years of age at the time) was first referred to Young Persons Probation (YPP) in February 2011 after appearing in the Circuit Court on serious charges of assault and violent disorder. He was one of a number of youths involved in an incident in his local town centre fuelled by an evening of heavy drinking. Although Michael was well known to the Gardaí he had never been involved in anything of this nature before.

On her first home visit the YPP Probation Officer (Jane\*) arrived to find Michael and his mother feeling extremely distraught and overwhelmed with anxiety as to what the future might hold. Jane's immediate concern was to offer reassurance, explain her role and begin to explore how they might work together over the coming weeks and months. Recalling this first contact Michael's mother said "the Probation Officer put me at ease straight away. I felt a weight come off me from our first meeting."

It was clear from Jane's assessment that the main risk factors were the negative influence of some of Michael's friends and his lack of commitment to his education, which meant that he had a lot of spare time on his hands. Jane was also concerned about his use of alcohol. This was exacerbated by the fact that he was consumed with guilt because of the

harm he had caused. As a single parent faced with these difficult circumstances, Michael's mother also needed a great deal of advice and support. At the next court hearing, Michael was placed on probation supervision and a plan was agreed with the family to address these issues.

His Probation Officer arranged the assignment of a mentor from the Le Chéile Mentoring project for Michael. Care and attention was taken to ensure that he was matched with someone he could get on with. The mentor's role is to support the young person, spend time with them in sport and leisure activities, thereby providing a positive alternative to offending. This felt a little strange to Michael at first but once he overcame this, his mentor a young woman, in her twenties quickly became a trusted support and someone he could confide in.

Working with the local Restorative Justice Project, Michael completed a Victim Empathy Programme to help him to fully understand and appreciate the impact of his behaviour on the victim, his family and the wider community. Reflecting on this experience Michael commented "I was very much inside myself, depressed, feeling so bad about what I had done. It helped me to like myself again. It really lifted me to a better place. I was sorry about what I had done but I learned to accept it."

Michael's mother was linked up with a parent mentor and also attended the Parents Plus programme. "I've learned things that have helped with my own children but also with my grandchildren. I'm much calmer now. It was great to have the mentor to confide in. I think

she will always be a friend. The best thing (about the course) was meeting other people in the same boat who understood what I was going through.”

Jane concentrated on working with Michael, through his supervision on probation, on his alcohol misuse and liaised closely with staff at the local training centre to get Michael’s education back on track.

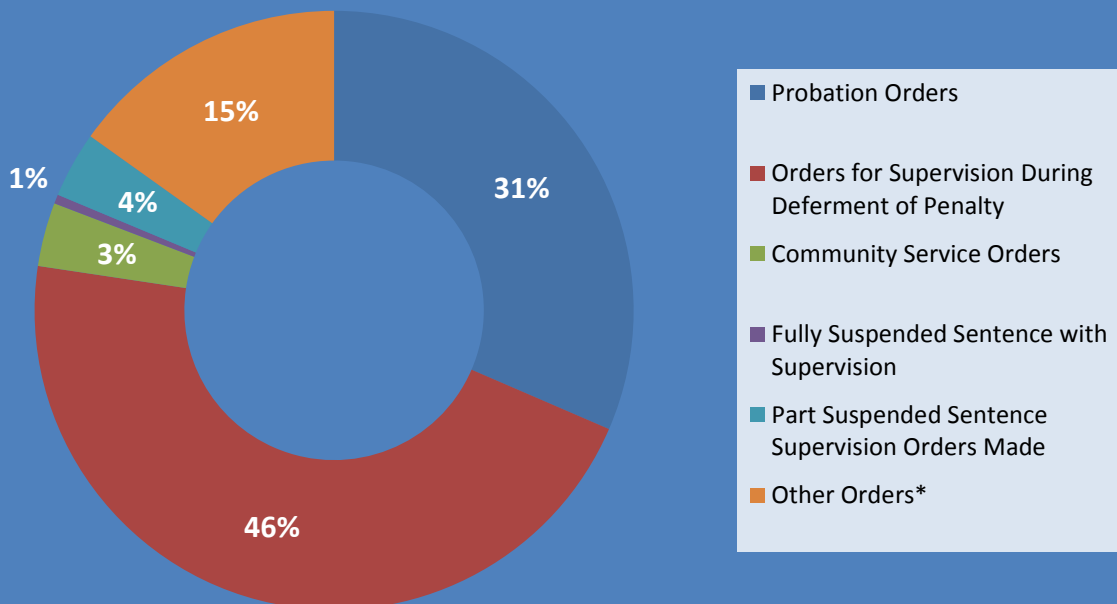
Two years on, Michael and his family are in a very different place. Having steered clear of any further trouble, his case was recently finalised by way of a suspended sentence. He has completed his leaving certificate applied and with help from another Probation project

he has passed his driver theory test. He is looking forward to the future and hopes that at some point he may be able to use his experiences to help other young people in similar circumstances....“for the first time in my life I have choices. I’m about to take the next step. It’s scary in a way but it’s also great.”

Michael’s mother also spoke with great relief after the final court outcome “I don’t know where we would be today had the court not referred us to your service. The whole family have benefited and I am so proud at how well my son has done.”

**\* While events described here are real, the names have been altered, to protect confidentiality**

## % Breakdown of Young Persons Supervision Orders in 2013





# Working in Partnership

All of us who work in the Criminal Justice System share the goal of helping to create a safer and a fairer Ireland.

While each organisation and agency within the Criminal Justice System brings its own unique contribution to the process, we multiply what each of us brings to the table when we combine our energies in a focused way. As an organisation founded on social work principles, the Probation Service is particularly conscious of the value in approaching problems systemically. We intervene, to help create positive change in offenders' lives, at the various points where individuals interact with their environment.

Interagency co-operation with our Justice partners, particularly the Courts, An Garda Síochána, the Irish Youth Justice Service, the Irish Prison Service and the Parole Board, is central to everything we do. Reducing crime and creating safer communities is a task requiring the input of a wider range of agencies. That is why we also collaborate closely with organisations such as the HSE, Local Authorities, the Department of Social Protection and numerous Community and Voluntary sector bodies.

While practical collaborative initiatives such as the multi-agency Sex Offender Risk Assessment and Management (SORAM) system, the Community Return and Community Support Programmes, and our Restorative Justice initiatives, have all been grown significantly in 2013. We will continue to build on and develop these and other strategic alliances into the future to ensure the best outcomes possible, in reducing crime and victimisation.

## Public Protection Advisory Group

In November 2013 the 4<sup>th</sup> annual Public Protection Advisory Group (PPAG) Seminar was hosted by the PBNI, in Hillsborough Castle. The PPAG was established in 2006 to specifically address how increased cross-border co-operation could be taken forward and to implement the probation elements of the agreed work programme coming from the Justice Ministers, North and South. The PPAG is jointly chaired by the Director of the Probation Board for Northern Ireland and the Director of the Probation Service.

The event was attended by our Minister for Justice and Equality Alan Shatter TD, and by Northern Ireland Minister for Justice, David Ford, MLA. The seminar was also attended by delegates from Justice Agencies throughout the island of Ireland. Addressing this year's conference theme, *One Size Fits All or Does It? – Complementary Contributions to Desistance*, practitioners from North and South presented on a range of innovative practices and developments including mental health; work with children and young adult offenders, accommodation, and victim issues.

The fifth PPAG seminar will be hosted by the Probation Service in Dublin in 2014.

## Co-operation in Europe

The Probation Service has a proud tradition of working with our European justice partners to promote the use of non-custodial sentencing options. As a founding member of CEP (the European umbrella body representing probation agencies across Europe) in 1981, the Service is committed to advocating for and developing probation at an international level. The Probation Service is represented on the CEP Board.

## World Congress on Probation

The First World Congress on Probation in London, UK, from 8-10 October 2013 was organised by CEP and English probation organisations. Delegates from 55 jurisdictions attended the Congress. The Congress was a truly global platform for the exchange of practice and knowledge. With expert presentations, informative workshops and many networking events it was an invaluable opportunity to meet with experts and colleagues from across the world.

## JCN Transition Management of High Risk Prisoners (JUST2011-2012 JPENAG2943)

Estonia, Finland, Ireland and Mecklenburg-Western Pomerania (Germany), with the University of Greifswald as advisers, are partners in an EU funded project to examine and develop best practice in the transition management and supervision of high risk offenders leaving custody as well as developing a body of knowledge and creating an EU network of expertise. The project commenced in November 2012 and will conclude in October 2014.

The Probation Service hosted the second project workshop from 12<sup>th</sup>-15<sup>th</sup> June 2013, looking at current practice, issues and

challenges in managing the transition of high risk offenders from custody to the community in each of the jurisdictions.

## EU Framework Decision 947 - Mutual Recognition:

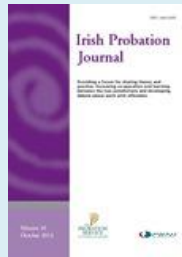
EU Framework Decision 947 provides for mutual recognition of probation decisions across all EU member states which, when fully implemented, will make it possible for a community sanction made in one EU country to be fully applied and enforced in another. Sharing best practice, mutual understanding and experience among the Probation organisations in Europe are important steps in preparing for the movement or supervision across Europe.

In 2011 the Ministry of Justice of Romania, in partnership with the Probation Service and the Italian Ministry of Justice, initiated an EU funded project to prepare for the recognition and transfer of non-custodial sanctions and measures among member states. The objective of the project was to develop a working model which aligned the probation systems, measures and community sanctions between the three member States. The project developed a common anger management programme I-MAP to be implemented in all three jurisdictions. The training programme for trainers and facilitators from *Romania, Italy and Ireland* was completed in Bucharest during April and May 2013.

During the remainder of 2013 the Irish trainers and facilitators have implemented and trialled I-MAP in practice. It is intended to introduce I-MAP in 2014, as a valuable practice resource for all Probation Officers in working with offenders with anger issues.

## 10 years of Irish Probation Journal

In November 2013 the Probation Service, with the Probation Board for Northern Ireland proudly launched the tenth edition of Irish Probation Journal. In its ten years the Irish Probation Journal has, through its authors and readers, surpassed expectations to become an authoritative and internationally acknowledged journal



valued by criminal justice practitioners, academics and policy-makers throughout the island of Ireland and beyond.

Irish Probation Journal is important as a forum for research, ideas and debate in the developing and constructive engagement between the research and academic community, interest groups, policy-makers and practitioners. Irish Probation Journal has a continuing role in supporting and encouraging this openness to enable knowledge exchange, critical debate and dialogue.



# Transnational Partnership working: A case study

## EXAMPLES OF A CASE TRANSFERRED FROM ENGLAND TO IRELAND



John\* was in custody in Liverpool, serving the remaining 2 years of an 8 year sentence. John had received the sentence 12 years previously, had been transferred to an open prison, absconded and came to live in Ireland.

He moved to Ireland with his wife and they subsequently had 2 children. The outstanding warrant for his recall to prison was executed when he returned to England to visit his mother.

He served 12 months in prison and was released on electronic monitoring to his mother's address in England. He was informed that he would be tagged for 6 months.

On his release from prison his Probation Officer contacted the Probation Service via the international desk enquiring if it would be possible for John to complete the remaining 6 months of his licence supervision in Ireland.

The requested documents were forwarded to the Service i.e. PSR, risk assessments, previous convictions, compliance to electronic monitoring and probation monitoring and the

reasons why a transfer would be beneficial to his rehabilitation.

A Home Circumstances report was completed by the Irish Probation Service which outlined the familial and employment situation that was available to him in Ireland.

The frequency and type of Probation supervision was also outlined in the report.

The issue of enforceability of the Order, in the event of non-compliance, was fully explained to the Probation Trust.

Contact was made by the Irish Probation Service with the local Garda (Police) Station and enquiries made as to whether he was known to them; in this case he was not.

The report was submitted to the Probation Trust and his application to undertake his remaining supervision in Ireland was processed by the Probation Trust.

It was agreed that his licence could be transferred and he returned to Ireland. Specific agreed issues were worked on with John and he was fully compliant with the Irish Probation Service. He did not commit any offences, re-integrated into his family and local community and returned to employment.

Reports as to his response to supervision were furnished to the Probation Trust and a final report on completion of the licence supervision.

\* While events described here are real, the names have been altered, to protect confidentiality



# Performance against set targets:

Throughout the year the Service measured its performance against its strategic goals outlined in the Service Strategy Statement 2011 – 2014 and against the programme of work mapped out in the Service workplans.

<b>Goal 1: Reduction of re-offending and prevent further victimisation through the promotion and delivery of community sanctions and measures.</b>	
Expansion of the range of innovative and evidence led interventions delivered by the Service nationally.	<ul style="list-style-type: none"> <li>• Assessment teams in Dublin and Cork reviewed, which has resulted in revised arrangements.</li> <li>• Choice and Challenge Group Programme was delivered in Dublin. Individual Programme piloted nationally.</li> <li>• Continued to contribute to the development of multi-agency responses to the management of specific offenders groups.</li> <li>• National SORAM co-located office established with staff from the Probation Service, Garda and Child and Family Agency. National rollout complete.</li> </ul>
Development of initiatives to break the cycle of offending, provide alternatives to custody and enable re-integration of offenders.	<ul style="list-style-type: none"> <li>• Community Service Review undertaken with recommendations for implementation completed. Additional community service site availability in Limerick, Westmeath, Tipperary and Louth.</li> <li>• The Service continued to work with Community Based Organisations to provide flexible and effective programmes aligned to the changing needs of the Service.</li> <li>• Staff trained in anger management programmes as part of EU Project.</li> <li>• Volunteer training provided to community based projects.</li> <li>• Safer Lives programme delivered in Dublin and Cork.</li> </ul>
Contribution to the development of Justice policy initiatives through the promotion of the significant role of community sanctions in the reduction of re-offending and as an effective sentencing alternative to custody.	<ul style="list-style-type: none"> <li>• A second Recidivism Study completed in partnership with the Central Statistics Office and a report published in December 2013.</li> <li>• Results of a Young Offender Drug and Alcohol Misuse survey were published in October 2013.</li> <li>• Review of Service work in prisons undertaken.</li> <li>• The Service continued to participate in the European treatment and transition management of high risk offenders' project.</li> <li>• Service submission to Penal Policy Review Group completed.</li> <li>• Service input into drafting of legislation.</li> </ul>

**Goal 2: Through strengthened strategic alliances and partnerships address crime and social inclusion.**

<p>Contribution to a criminal justice wide co-ordinated and integrated system of offender management.</p>	<ul style="list-style-type: none"> <li>• Joint Probation Service and Irish Prison Service Strategy launched in May 2013.</li> <li>• National SORAM office established with staff from the Probation Service, An Garda Síochána and the HSE.</li> <li>• Service representation on NDRIC and Regional and Local Drugs Task Forces.</li> <li>• Service representation on Homeless Networks and Children’s Services Committees.</li> <li>• On-going participation on COSC National Steering Committee and contributions to COSC strategic goals.</li> </ul>
<p>Work with local, national and European partners to develop and deliver effective services to reduce reoffending.</p>	<ul style="list-style-type: none"> <li>• North South Public Advisory Group (PPAG) seminar held in November 2013.</li> <li>• Meetings held with PBNI to further develop Service links and co-operation.</li> <li>• Active participation in CEP. Assistant Director elected to the Board for 3 year period.</li> <li>• Partnership arrangements with 1) Germany – in relation to reintegration of high risk offenders. 2) Portugal regarding juvenile recidivism and 3) the Netherlands in exploring the feasibility of circles of support and accountability.</li> <li>• Continued engagement with our counterparts in Romania and Italy in the development of a common anger management programme.</li> <li>• Hosted JCN Transition Management of High Risk Prisoners workshop in June 2013.</li> </ul>
<p>Worked to improve outcomes for victims and offenders through developing enhanced strategic alliances with the wider statutory, voluntary and community sector.</p>	<ul style="list-style-type: none"> <li>• Service strategy on Restorative Justice published.</li> <li>• Co-chaired Restorative Justice Conference in November.</li> <li>• Funding for extension of RJ services sanctioned.</li> <li>• CBO’s encouraged to support the use of Restorative practice in local communities. Training in RJ practices delivered.</li> <li>• Service partnered with Italy in project on Integrated Restorative Justice.</li> <li>• Restorative interventions provided for YPP referrals in Limerick.</li> <li>• Continued liaison with Victim support Unit in Department of Justice and Equality.</li> </ul>



### Goal 3: Enhanced organisational capability in delivering excellence and innovation.

<p>Delivered services to highest standards and levels of professionalism</p>	<ul style="list-style-type: none"> <li>• Revised case management plans implemented in new cases.</li> <li>• File management and guidelines updated.</li> <li>• Enhanced liaison with Judiciary. Information sessions on Service work provided to new appointees to the Judiciary as requested.</li> <li>• Participation on Court Service User liaison committees.</li> <li>• Revision of YPP guidelines on report writing and management of community service.</li> <li>• Management statistical reports and analytical support provided to Probation Service Management.</li> <li>• Training delivered on effective interventions.</li> </ul>
<p>Maximise the benefits of ICT, research and data management</p>	<ul style="list-style-type: none"> <li>• Case tracking System updated to incorporate new business processes including community return.</li> <li>• Twelve editions of electronic Service newsletter published enhancing internal and external communication and information exchange.</li> <li>• Continued to participate in Departmental ICT Governance and ICT Liaison Group meetings.</li> <li>• Use of Service E-learning platform expanded, facilitating increased training and survey capacity.</li> <li>• Community Projects business plans submitted through central Community Projects Database.</li> <li>• Website reviewed and updated regularly. Research and general Service publications made available via the Service website.</li> <li>• Survey on Drug and Alcohol Misuse among Young Offenders on Probation conducted and report published.</li> <li>• Second Probation Service Recidivism Report published in December 2013.</li> </ul>
<p>Effective management of resources achieving value for money.</p>	<ul style="list-style-type: none"> <li>• Continued engagement with and contribution to the Department's workforce planning process.</li> <li>• Staff redeployed as necessary ensuring capability in right places to deliver services in short and long term.</li> <li>• Performance managed using PMDS process.</li> <li>• Systems reviewed to take account of additional hours under Haddington Road agreement.</li> <li>• Estate Review concluded May 2013.</li> <li>• Revised Financial procedures manual completed and circulated.</li> <li>• National Procurement Service and central contracts utilised.</li> <li>• Energy awareness group established.</li> <li>• Managed EU budgets and financial reports on request for all international projects.</li> </ul>

## PROBATION SERVICE/IRISH PRISON SERVICE JOINT STRATEGY

The Irish Prison Service and the Probation Service have worked closely together, over many years, to help prisoners reduce their risk of reoffending and to make a positive contribution to their communities, through proactive sentence management and the provision of prisoner resettlement programmes.

In May 2013, a joint strategy document was developed setting out for how the two organisations will continue to develop and co-ordinate our joint working, in conjunction with our statutory and community and voluntary sector partners, to further improve outcomes to help create a safer and fairer Ireland. Progress on this strategy is outlined in the next section.



Above: Images from the launch of the Joint Irish Prison Service/Probation Service Strategy 2013-2015

# Update on Joint PS/IPS Strategy

## 1

Continuum of Sentence Management

### IN ENHANCING SENTENCE MANAGEMENT AND THROUGH-CARE OF PRISONERS, WE HAVE:

- Piloted prisoner Community Support Schemes in Cork and Dublin.
- Developed appropriate programmes for high risk sexually violent offenders both in prison and the community.
- Received approval for a Senior Psychologist, with responsibility for sex offender assessment in the Midlands Prison as a conduit to the national treatment centre, Arbour Hill Prison.
- Piloted a new programme in prisons with life sentenced offenders.
- Piloted specific offending behaviour programmes 'Choice and Challenge' with prisoners.
- Jointly funded with the Department of Social Protection, Community Welfare Prison In-Reach Service to assist in the preparation of prisoners for release.

## 2

Community Return

### IN FURTHER ROLLING OUT THE COMMUNITY RETURN PROGRAMME, WE HAVE:

- Exceeded the target (300) of participants in 2013 with 396 structured releases, allowing for the establishment of new target of 450 releases for 2014.
- Explored the expansion of the Community Return programme to more prisoners.
- Established a horticultural project at Thornton Hall as a prisoner reparation project with first produce scheduled for early summer 2014. Voluntary food/meal providers to be the beneficiaries.
- Begun exploring, through Prison based Education Units, the potential for utilising the Thornton Hall resource to establish an accredited programme during 2015.

## 3

Supports for Short Term Prisoners

### IN THE PROVISION OF SUPPORT FOR SHORT SENTENCED PRISONERS, WE HAVE:

- Engaged with the community based NGO, Care After Prison, to provide support and advocacy to prisoners serving sentences under 12 months released on temporary release back into the community.
- Successfully placed 64 referrals on the Dublin pilot since May 2013.
- Engaged with the community based NGO, Cork Alliance, to provide support to short sentenced prisoners leaving Cork Prison and have successfully placed 73 referrals on the Cork pilot during 2013.
- Have opened discussions on extension of the Community Support Scheme to Limerick and the West Dublin Campus.

## 4

Cork and Limerick Initiatives

### IN DEVELOPING RESPONSES TO LIMERICK AND CORK PRISONS, WE HAVE:

- Commenced development of an advocacy worker project.
- Begun piloting Community Support Schemes for short sentence prisoners in Dublin and Cork, with further roll out planned to Limerick Prison in 2014.
- Extended the Community Return Programme to both institutions.
- Integrated released prisoners on the community return programme into community reparation programmes such as the 'Graffiti Removal Project'.

# 5

## Women Offenders

### IN ADDRESSING THE NEEDS OF WOMEN OFFENDERS, WE HAVE:

- Developed a Joint Women's Strategy.
- Begun development of a one-stop-shop project in Dublin.
- Initiated and delivered several programmes tailored for women with a history of offending and piloted a dedicated approach to working with women offenders in some areas.
- Begun work on placing women on 'female-friendly' Community Service and Community Return sites.

# 6

## Young Offenders

### IN ADDRESSING THE NEEDS OF YOUNG OFFENDERS, WE HAVE:

- Transferred all sentenced 17 year old prisoners to a specialised unit in Wheatfield Place of Detention from St. Patrick's Institution.
- Commenced the transfer of prisoners under the age of 21 years to Wheatfield Place of Detention.
- Designed education and training specific community return options for young offenders under the age of 21.
- Agreed and implemented a new approach to structured probation supervision of released young offenders with Young Persons' Probation.

# 7

## Joint Development of Statistical Data

### IN WORKING TO ENSURE OUR PRACTICE IS INFORMED BY ACCURATE DATA, WE HAVE:

- In conjunction with the Central Statistics Office, followed up on the first recidivism study with an updated study covering offenders released from prison as well as offenders undertaking supervised community sanction in 2008.
- With the Central Statistics Office, agreed a yearly programme of further recidivism studies which will be reviewed and developed on an annual basis.
- Commenced research evaluation of the community return programme.

# CORPORATE AFFAIRS

**The Corporate Affairs directorate has a wide range of responsibilities including Human Resources; Research, Learning and Development; Finance; Community Based Organisations Unit and Corporate Services which in itself encompasses Information Technology; Estate and Facilities Management; Information and Statistics.**

The work of the Directorate supports our delivery of a quality service. The Probation Service is committed to best corporate governance principles with well-defined and managed practices that takes account of stakeholders and ensures ethical standards are met.

## HUMAN RESOURCES

The Service continued to proactively manage its human resources which involve redeployment of staff and realignment of teams in some instances towards maximum front line service delivery. In 2013 the Service has also engaged on an on-going basis with the Human Resources Division, Department of Justice and Equality on various staffing issues. The Performance Management and Development System which has been embraced by grades at all levels continues to be an integral part of human resource management and was further strengthened during the year with particular focus on managing performance, including underperformance.

The Probation Service, along with the Department of Justice & Equality, was part of the first group of Departments/Agencies identified for the introduction of *People Point*. The Service fully embraced the process, implementing a number of internal measures across the Service to support its introduction.

The Probation Service in tandem with the Department of Justice and Equality and other Government departments is committed under

the *Haddington Road Agreement 2013* to increase capacity and drive change with a strong focus on enhanced service delivery for all customers. During 2013, we increased our availability to the public and other stakeholders by realigning the working day across the Service to reflect the new standard hours. With a reduction in staffing numbers, the span of control at senior and middle management grades has increased. The Service has also strengthened its training and development capacity and capability through the introduction of the 'practitioner trainers' programme developed to deliver training 'in house' and with our criminal justice partners, including An Garda Síochána, the Irish Prison Service and the Irish Youth Justice Service

Following approval to fill the vacant Deputy Director post, the competition was held and a new Deputy Director was appointed in January 2013.

Sanction was received for additional community service resources to augment the delivery of Community Service and the Community Return Schemes. Two additional Community Service Supervisors were recruited in 2013 in addition to increasing hours for a number of established part time Community Service Supervisors in key locations nationwide where an increasing demand was identified. Sanction was granted for a Locum Probation Officer Panel. Interviews were held in December 2013.

The on-going successful recruitment of Interns under *Job Bridge*, the National Internship Scheme, in 2013 provided Interns with an opportunity to gain valuable experience in the Probation Service while assisting the Service in the development of its quality assurance standards and internal research capacity.

The Probation Service actively promotes the health and wellbeing of all staff and recognises the importance of promoting a positive working environment for all. Through our ongoing *Health and Well Being Programme* we continued to create awareness and the promotion of healthy lifestyles. This year our programme included positive mental health initiatives as well as the ongoing promotion of healthy eating and exercise.

## **STAFF TRAINING AND PROFESSIONAL DEVELOPMENT**

During 2013 the Research, Learning & Development Unit continued to facilitate training courses, seminars and conferences aligned to the business and operations of the Probation Service, ensuring staff are resourced and competent to meet business goals in a professional and efficient manner. A priority for training in 2013 was to continue to support the professional competence of relevant staff in the use of the various risk assessment instruments which are now a standard of practice in the Probation Service, in addition to the provision of a range of learning opportunities focusing on effective probation practice in interventions with offenders.

The Service's commitment to cross agency/interagency training, particularly in the areas of risk assessment and restorative practice, remained high on the agenda. In addition, a number of staff attended external training delivered by partner agencies including: Children First training, delivered by the Health Service Executive; Sex Offenders interventions and management training, delivered by National Offender Treatment Association (NOTA); Non-Violent Resistance (NVR) training delivered under the DAPHNE programme of the European Union and the Individual Anger Management Programme (IMAP), delivered cross nationally, also under the auspices of the EU.

Many Probation Officers are social work practice teachers. The Probation Service facilitated approximately 50 professional practice placements for social work student in 2013. These placements are a core element of professional social work training and are typically of 14 weeks duration. Students were pursuing programmes in University College Dublin, Trinity College Dublin, University College Cork and the National University of Ireland Galway.

Registration with CORU became a mandatory condition for practice as a professional social worker in 2013. Professional staff were encouraged to register and to date many have done so. During the year lectures were delivered by Probation Service staff from the training unit to M. Soc. Sc. Students in University College Dublin and Trinity College Dublin and to PhD. Psychology students in University College Galway.



The list of training provided in 2013 is set out below:

TRAINING COURSES PROVIDED IN 2013	
General Training and Specific Offender Interventions	Risk Assessment Training
Training for Community Service Supervisors	LSI-R Train the Trainers
Suicide and Self Harm Awareness	SA2007 Train the Trainers
Individual Anger Management Programme (IMAP)	LSI-R assessment (adult offenders)
IMAP - Train the Trainers	YLS/CMI assessment (offenders under 18 years) (Probation, Garda, Community Projects)
Introduction to Restorative Justice	
Restorative Justice Conferencing (Probation, Irish Prison Service and Garda and Community groups)	RM 2000 (Sex offenders ) (Probation and Irish Prison Service staff)
Motivational Interviewing	SA2007 (Probation Service and An Garda Síochána)
Victim awareness in offender work and preparation of Victim Impact Reports	Probation Service Assessment of the Risk of Serious Harm (PS/ROSH)
The Management and Supervision of Sexual Offenders	Preparation and presentation of Pre-sanction Report Writing
Individual intervention programme for male perpetrators of domestic violence	
Prison assigned Probation Service staff induction programme	
Introduction to Desistance Theory	

## Management Conference:

The inaugural Probation Service Management Conference hosted by the Director of Service was held in the Irish Prison Service Training College, Portlaoise on the 5th and 6th December 2013. The conference titled “Leading the Probation Service for Lasting Change” was attended by all management grades.

The conference provided all managers with an opportunity to collectively consider the issues, challenges and opportunities in leading the Service towards lasting change.



## Customer Service

The Probation Service is committed to a quality customer focus in service delivery. The Service has a Customer Service Officer who oversees customer service complaints. Details of the customer service policies are available on our website.

*In 2013 there were 12,137 offender interviews held in the Haymarket Office compared to 10,402 in 2012 an increase of 16%.*



*Over 5,000 offender interviews were held in Cork with 4,030 in Limerick.*

## Research

The Probation Service recognises the importance of continuing research to the work that we do. Outputs from relevant research projects inform policy and practice and the overall strategic plan.

During the year we focused on two key pieces of research.

1. A National Survey on Drug and Alcohol Misuse among Young Offenders on Probation, which followed on from a similar study on adult offenders completed in 2012.
2. The Probation Recidivism Study 2008 – 2013 which followed on from the 1st Recidivism Study carried out in 2012.

The Service also participated in external research in sex offender risk management titled *“Evaluation of Stable & Acute 2007 Risk Assessment and Supervision Model in use in Ireland and Northern Ireland”*. This is a jointly commissioned research project by the Irish Probation Service and the Probation Board for Northern Ireland.

## Probation Service Research Studies published in 2013

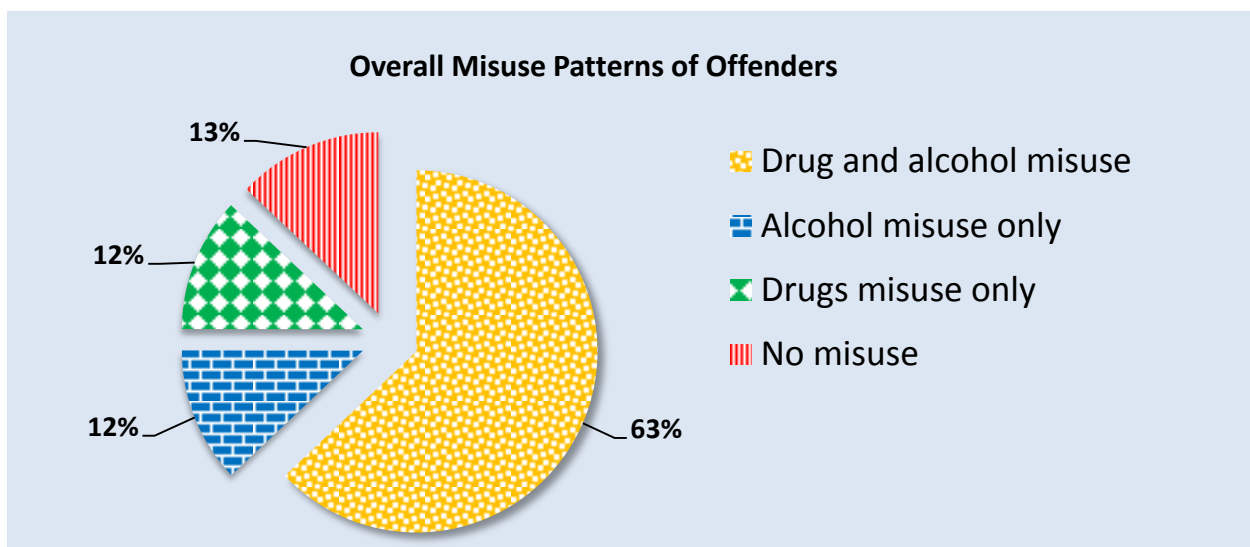
### DRUG AND ALCOHOL MISUSE AMONG YOUNG OFFENDERS ON PROBATION

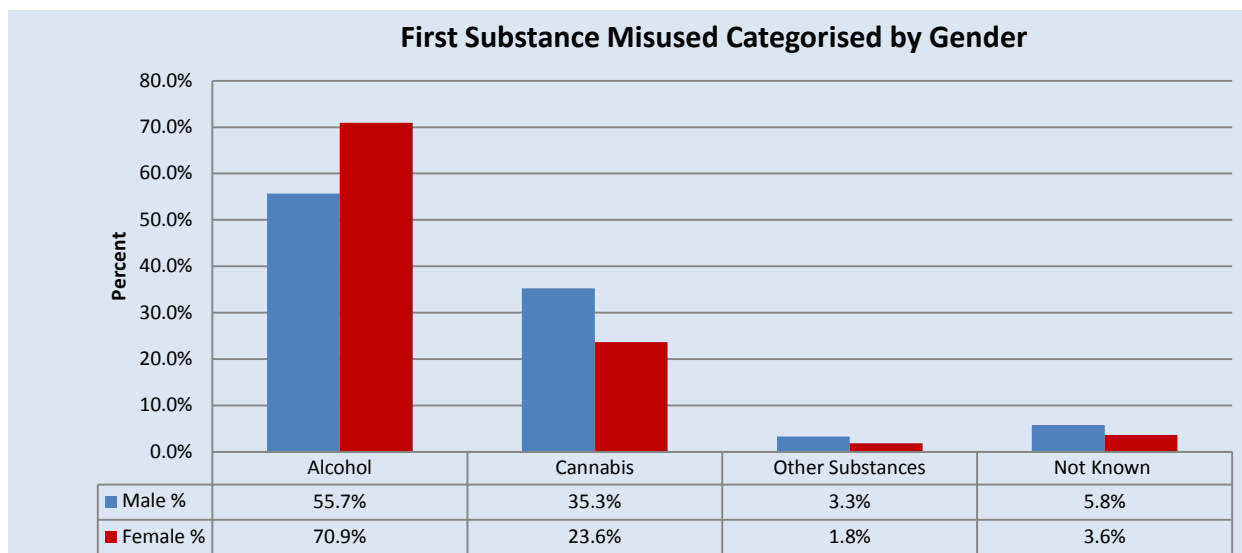
The report was published in October 2013. This research was built on previous research undertaken on drug and alcohol misuse among adult offenders on Probation. It delivers on our goal to enhance organisational capability by informing and improving the quality of the work with young people subject to Young Persons Probation supervision.

The survey covered offenders on probation supervision that were aged 20 years or less on the day of the survey. Key findings as follows:

- 87% of survey population reported as having misused drugs, alcohol or a combination of both.
- Male and female offenders had relatively similar levels of substance abuse.
- Alcohol was the substance most misused on a weekly basis and was the most common gateway substance.

In more than 80% of cases, substance abuse was linked to current offending.





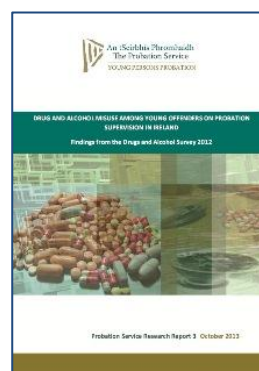
### PROBATION SERVICE 2<sup>nd</sup> RECIDIVISM STUDY

The Probation Recidivism Study 2008 – 2013 is the second Probation Service recidivism study completed in partnership with the Central Statistics Office. Recidivism is a measure of reoffending with a higher level of recidivism meaning a higher level of reoffending.

Given the importance of the data outcomes from the recidivism studies it is intended that further studies will be completed in conjunction with the CSO. It is hoped to build on the information generated in future studies and trends highlighted will inform service delivery.

Key findings as follows:

- Recidivism or re-offending rate was 41% for offenders who had been under probation supervision or community service in the three years following the imposition of an order by the court.
- When compared with the equivalent cohort from the previous study there is a fall in recidivism of almost 8%.
- Recidivism rate decreased as the offender age increased.
- Male offenders represented 87% of the total population and had a higher recidivism
- The three most common offences for which offenders were reconvicted were the same as in the previous study: Public Order, Theft and Controlled Drugs Offences.

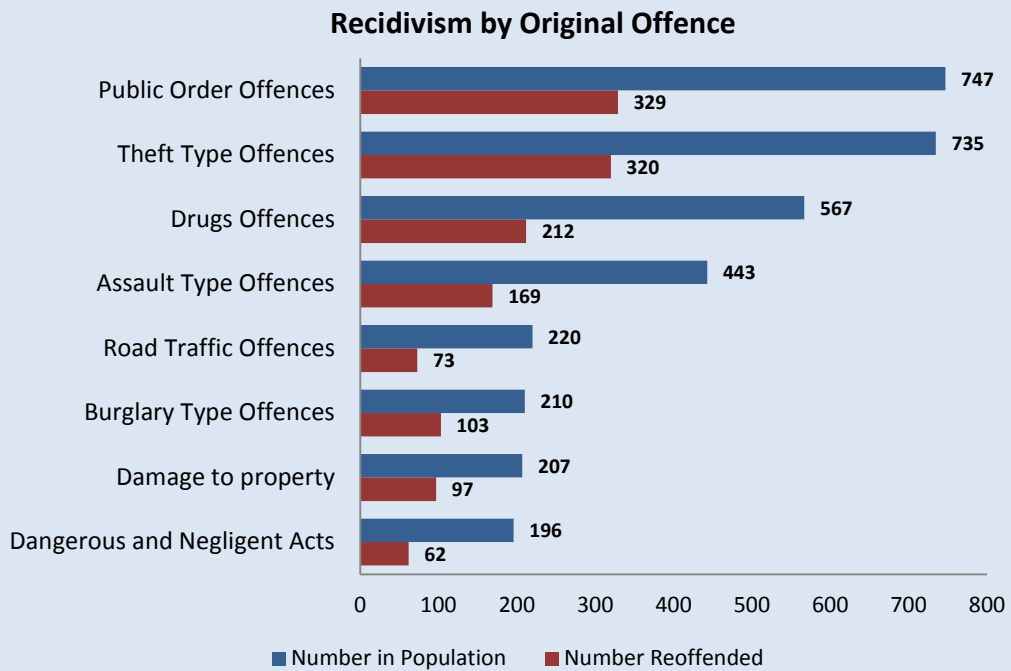
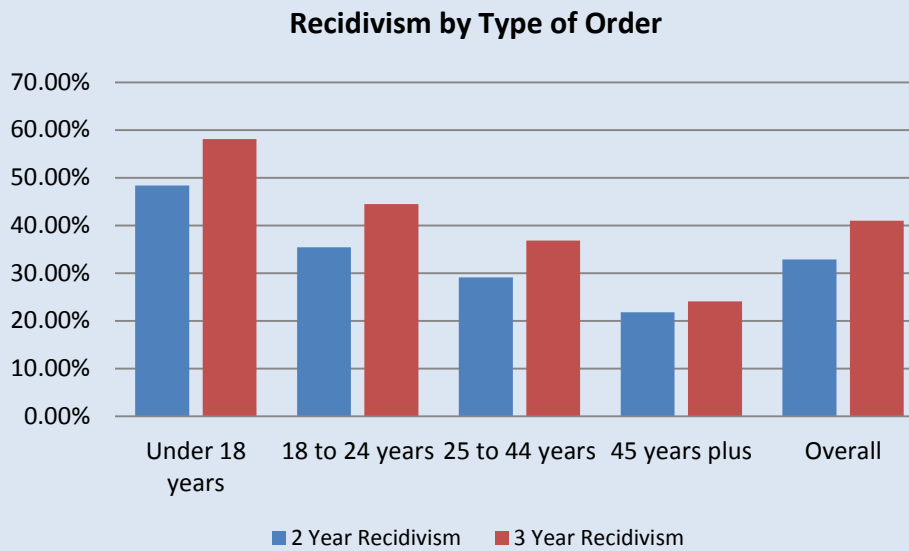
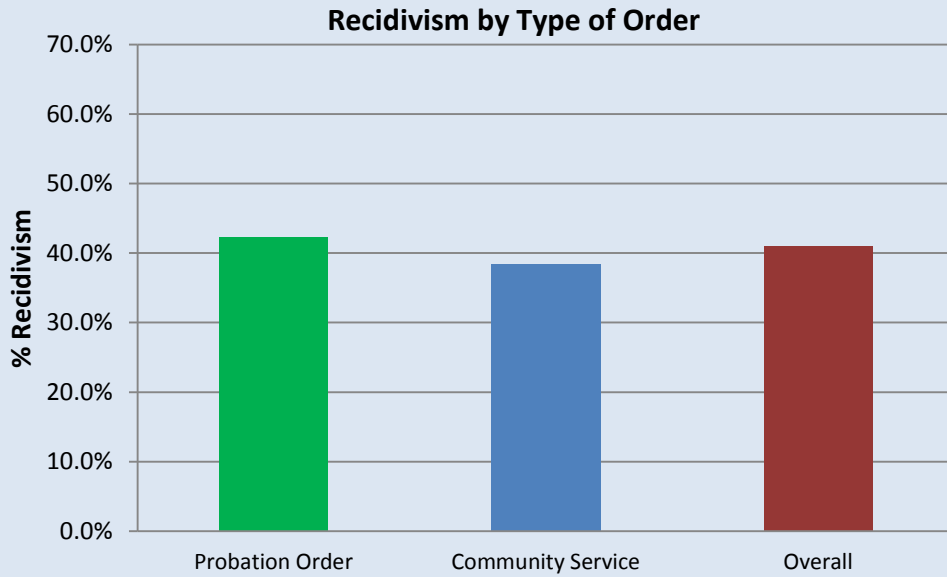


**Drug and Alcohol Misuse among Young Offenders on Probation Research Study**



**Probation Service 2<sup>nd</sup> Recidivism Study**

Full reports on both studies are available on [www.probation.ie](http://www.probation.ie)





## Finance

The Probation Service was allocated a budget of €38.119 million for 2013; actual expenditure was €35.800 million delivering savings of €2.319 million in the year. Pay accounted for approximately 61% of the Service's expenditure. The other most significant area of expenditure was Services to Offenders (Current) which accounted for 28% of the overall budget.

The primary function of the Finance Division of the Probation Service is the financial management of resources available to the Probation Service. The Finance Division has responsibility for the following areas:

- Financial management and planning
- Financial reporting and budgetary control within the Probation Service
- End of Year Reporting to Department of Justice and Equality
- Provision and management of financial management systems
- Procurement and Supplier contract management
- Employee allowances and expenses
- Financial Management of Probation Service funded community based organisations

### FINANCIAL MANAGEMENT

The Probation Service continued during the year to enhance financial reporting and develop systems of financial management to deliver effective monitoring of expenditure and improved financial management and control as follows:

- 1) The Probation Service financial procedures manual was updated and rolled out nationally in 2013.
- 2) A cost study was completed during the year based on 2012 data and the results are summarised in the following table. The figures are compared to the 2010 cost analysis.

UNIT COST OF ASSESSMENT REPORTS FOR COURT				
	Community Service Report	Pre-Sanction Report District Court	Pre-Sanction Report Circuit Court	Pre – Sanction Report with CSO
<b>2012 Analysis</b>	€280	€960	€1,550	€710
<b>2010 Analysis</b>	€300	€1,000	€1,700	€800

UNIT COST OF SUPERVISION					
	Probation Order	Supervision during deferment of penalty	Average Cost of a Community Service Order	PSSSO cost per annum	PRSO cost per annum
<b>2012 Analysis</b>	€5,000	€5,300	€1,500	€5,000	€6,300
<b>2010 Analysis</b>	€5,000	€6,200	€2,200	€5,500	€6,900

## Procurement

The Probation Service continues to monitor purchasing expenditure, review purchasing requirements and consolidate the purchasing of goods and services to ensure better value for money.

Procurement savings arose as a result of the following measures taken to reduce costs:

- Ongoing market testing ensuring a reduction in the amounts paid for goods and services.
- Using contracts placed centrally by the National Procurement Service, centralised framework agreements and tender arrangements made available by the Department of Justice and Equality and Agencies and other Departments.
- Efficient management of office supplies and consumables by bulk ordering of goods and centralised purchasing arrangements.

The Probation Service is represented on the Department of Justice and Equality Procurement Network.

## Estate and Facilities

During the year the Estate and Facilities Unit continued to liaise with the Office of Public Works and Regional Managers on the management of Probation Service estate and facilities throughout all offices nationwide. A comprehensive review of the Probation Service Estate was undertaken and a report was published in May 2013. An implementation group was convened in September 2013 to consider and action recommendations. A number of meetings have been held with a view to commencement in the 1st quarter of 2014.

In April 2013 the Service relocated its Ennis office to a new office, designed to a high

standard, in a government complex in the vicinity.

## Energy Awareness

During 2013 the Service re-established its Energy Working Group and attended the Sustainable Energy Authority of Ireland (SEAI) seminar in December at which energy reporting tools were demonstrated.

The Service will be actively looking at its energy consumption with a view to generating energy savings. MPRN's and GPRN's (Electricity and Gas meter readings) have been collated in advance of being submitted to SEAI in January 2014, as required.

## Information

Information and communication requests continued to be co-ordinated through Corporate Services. In addition a dedicated FOI and Data Protection unit ensures prompt responses to requests for personal information and information on the work of the Service.

FOI	34
Data Protection	08
Agency Requests	04
<b>TOTAL NO OF REQUESTS</b>	<b>46</b>

<b>INFORMATION REQUESTS</b>	
Press Queries	06
Dail Questions	49
Other	135
<b>TOTAL NO OF REQUESTS</b>	<b>190</b>

## Information Communications Technology

The IT Unit in the Probation Service provides and maintains a range of IT services which support the Operational and Strategic functions of the Service. In 2013 a number of key IT projects were finalised. Changing business processes are incorporated into the Service Case Tracking System. As such, with the extension of the Community Return Scheme, the IT requirements for this scheme were integrated into the Service's existing Community Service Database.

The Probation Service is represented on both the Departments ICT Governance Group and the ICT Liaison Group and liaises with the Departments ICT Unit on an on-going basis.

Managed print services were rolled out by the ICT unit commencing in September 2013 resulting in efficiencies for the Service.

## Communication

In 2013, the Service launched a new newsletter publication, which is now circulated bimonthly to external stakeholders. "Probation works" provides news on developments in probation and related areas of work, in Ireland and internationally. One of the goals of the publication is to provide those outside of the Service with clear, relevant and easily digestible information on who we are and what we do.

"Probation works" is circulated to in excess of 400 individuals and organisations, as well as being tweeted to many hundreds more. You can subscribe to the mailing list by submitting your email address on the Service website [www.pprobation.ie](http://www.pprobation.ie), in the news/newsletters section or by emailing [psinfo@probation.ie](mailto:psinfo@probation.ie).

"Probation works" is a sister publication to "Probation Press", the Service's internal/staff newsletter which is published bi-monthly on alternate months to the Probation works publication. Both publications are produced totally in-house, and circulated electronically, at no cost to the taxpayer.



Probation works



Probation Press

## Health and Safety

Health and Safety continued to be a priority within the Service in 2013. The National Health and Safety Committee met on two occasions during the year with the Health and Safety Policy Committee meeting seven times. Health and Safety was on the agenda at all Management, Regional and Team meetings. The Service also contributed at the Risk Management Network for State Authorities Meetings organised by the State Claims Agency.

The Service continued to work closely with the State Claims Agency throughout 2013 and have made significant progress towards the adoption of ISO 18001 Occupational Health and Safety Management Standard. The Service are working towards commencement of implementation in pilot sites in the second quarter of 2014.

## Management Information

The use of quality data, statistics and data analysis is a key tool in the implementation of key policies and in the delivery of frontline services. The Probation Service continuously reviews and improves upon the data management systems. This informs our business needs and contributes to an integrated approach to information sharing between our partner organisations.

A key project during 2013 was the completion of the second research study on Recidivism in Ireland which was conducted in conjunction with the Central Statistics Office and was carried out alongside a similar report from the Prison Service / Central Statistics Office. The provision of quality data was also key to other research work undertaken by the Service during the year.

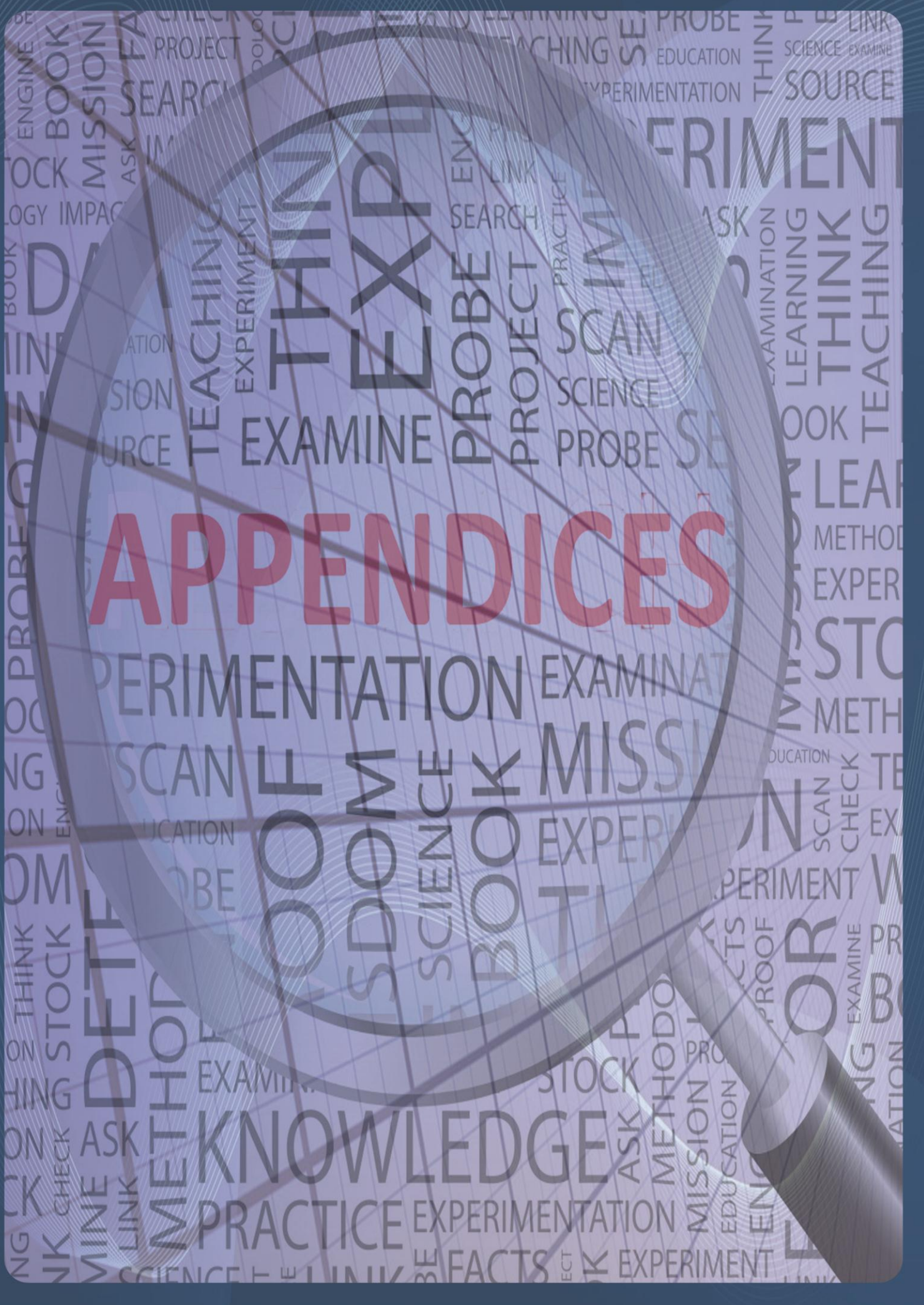
Service systems were further developed during 2013 to provide more timely and accurate responses to information requests. Comprehensive management reports are generated monthly and the Service also produces common headline data reports with our counterparts in the Probation Board for Northern Ireland as part of the Public Protection Advisory Group's *Partnership Working for Public Protection* initiative. Ongoing developments in service delivery have been supported by appropriate data management and analytic support.

The Service recognises that continuous improvement in the quality of data and information reports is crucial in this era in which performance is measured and where efficiencies must be provided and improved while maintaining and improving service quality.

***8,368 requests for criminal records were processed in 2013.***



# APPENDICES





# Glossary of terms

## ASSESSMENT

Probation Officers deliver an offender assessment service to Courts to assist in sentencing decisions, particularly where probation supervision or community service is being considered. There are two main types of offender assessment report:

**PRE-SANCTION REPORT (PSR)** These are also known as ‘probation reports’, assessing suitability for a community sanction and issues relevant to reducing reoffending. Building on the findings of structured risk assessment, probation reports outline the underlying factors in the offending behaviour, the offender’s attitude to the crime and motivation to change, and action to be taken to help prevent further offending.

**COMMUNITY SERVICE REPORT (CSR)** These reports assess suitability of an offender to do unpaid work in the community instead of going to prison.

## SUPERVISION

### PROBATION ORDERS

Probation Orders are one of a range of options open to courts when sentencing individuals found guilty of criminal behaviour. Offenders give an undertaking to the court that they will be of good behaviour; avoid further crime; adhere to the conditions of the order and to follow the directions of a supervising Probation Officer, who will monitor and help them to stay out of further trouble.

### COMMUNITY SERVICE ORDERS

Instead of a prison sentence, convicted offenders over 16 years of age may, instead, be given the opportunity by the Court to perform unpaid work for the community. The legislation for Community Service Orders allows a Judge to sentence an offender to between 40 and 240 hours work. Any Order made must be completed within a year. Community Service is a direct alternative to a prison sentence and an Order will only be made by the Judge where a custodial sentence has first been considered.

### COMMUNITY RETURN

The Community Return Programme is an incentivised scheme introduced in line with the recommendations of the Thornton Hall Project Review Group which provides for earned temporary release under which offenders who are assessed by the IPS are offered early temporary release in return for supervised community service. Officers of the Probation Service assess offenders as to suitability and motivation to complete the community work.

The scheme is applicable to suitably assessed prisoners who are serving sentences of more than one and less than eight years. Those participating are granted renewable temporary release having served at, or after, the 50% stage of their sentence with a condition of their release to undertake community service supervised by the Probation Service.

## **SUPERVISION DURING DEFERMENT OF PENALTY**

Supervision during deferment of penalty is a judicial practice whereby the Court does not proceed to determine the appropriate penalty but instead postpones the decision to a further date, on condition that the offender complies with to the supervision of a Probation Officer and avoids reoffending.

## **POST RELEASE SUPERVISION**

Under the Sex Offenders Act, 2001, Judges can sentence sex offenders to a period of probation supervision following their release from prison. Such offenders are monitored closely. During supervision, the Probation Officer focuses on the offence committed and its implications for public safety, helping the offender to see the past offending behaviour as a problem, identify risk factors and develop strategies and supports to ensure there is no repeat offending.

## **CONDITIONAL SUSPENDED OR PART-SUSPENDED SENTENCES**

Judges can deal with a case by way of a suspended or part-suspended sentence with conditions of probation supervision. This means the Judge may:

- Issue a prison sentence of a number of months or years; and
- Suspend all or part of the sentence for a period of time, conditional on the offender remaining under the supervision of a Probation Officer for the specified time for which the custodial sentence is suspended.

## **SUPERVISED TEMPORARY RELEASE**

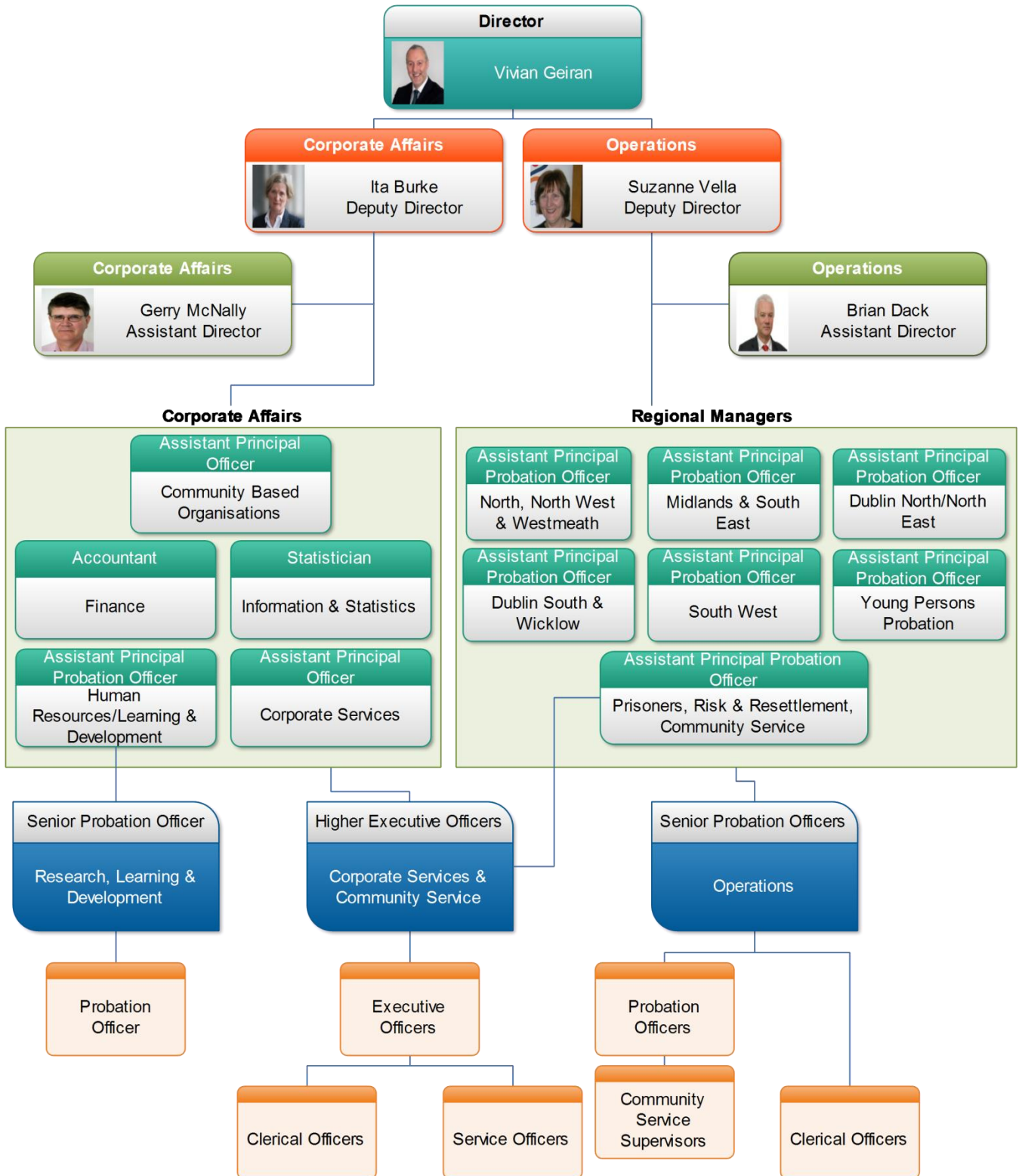
The Probation Service supervises some prisoners on temporary release from custody (as provided for in the Criminal Justice Act, 1960 and the Criminal Justice (Temporary Release of Prisoners) Act, 2003) in the community with specific conditions aimed at helping with their reintegration in the community and to avoid further offending. Life sentence prisoners on release in the community are obliged to co-operate and comply with Probation Service supervision as a condition of temporary release. Such prisoners, in the normal course, remain subject to supervision for the remainder of their lives.

## **FAMILY CONFERENCE**

In addition to the above, there are a variety of disposals managed by the Probation Service specific to young persons who offend, as outlined under the Children Act 2001, as amended. These include Family Conferencing. A Family Conference is based on principles of restorative justice which, in essence, means healing the harm done to victims, while holding the offender accountable for his or her actions. The aim of the Family Conference is to divert the young person who has accepted responsibility for his/her behaviour from court, conviction and custody, and from committing further offences.

## **ACTION TAKEN IN CASES OF NON-COMPLIANCE WITH COURT ORDERS**

In cases where offenders on supervision fail to comply with the terms of any of the above supervision orders, they are returned to the relevant court to face the consequences. This can include imposition of an alternative penalty, up to and including a custodial sentence.



# Finance

FINANCIAL STATEMENT INCOME & EXPENDITURE 2013					
		BUDGET PROVISION	PROVISIONAL OUTTURN	SAVINGS	EXCESS
		€000	€000	€000	€000
<b>VOTE 24</b>	<b>JANUARY- DECEMBER 2013</b>				
<b>B10</b>	Salaries, Wages and Allowances	21,418	20,859	559	-
<b>B11</b>	Operational (Travel, Postal & Telecom, Office Premises, Office Machinery)	4,025	3,123	902	-
<b>B12</b>	Services to Offenders				
	Assistance to Voluntary Bodies (Current)	10,572	9,703	869	-
<b>B13</b>	Community Service Order Scheme	2,104	2,115		-11
<b>TOTALS</b>		<b>38,119</b>	<b>35,800</b>	<b>2,330</b>	<b>-11</b>

FINANCIAL STATEMENT INCOME & EXPENDITURE 2012					
		BUDGET PROVISION	OUTTURN	SAVINGS	EXCESS
		€000	€000	€000	€000
<b>VOTE 24</b>	<b>JANUARY- DECEMBER 2012</b>				
<b>F1</b>	Salaries, Wages and Allowances	21,992	21,117	875	
<b>F2</b>	Operational (Travel, Postal & Telecom, Office Premises, Office Machinery)	4,723	4,069	654	
<b>F3</b>	Services to Offenders				
	Assistance to Voluntary Bodies (Current)	11,172	10,350	822	
<b>F4</b>	Community Service Order Scheme	2,284	2,053	231	
<b>TOTALS</b>		<b>40,171</b>	<b>37,589</b>	<b>2,582</b>	<b>0</b>

### **Prompt Payment of Accounts Act 1997**

The following information is provided in accordance with the Act within the guidelines issued by the Department of Enterprise, Trade and Employment. The Probation Service has procedures in place to ensure that all invoices are paid within the statutory time limit. While the procedures have been designed to ensure compliance with the Act, they only provide reasonable and not absolute assurance against material non-compliance with the Act.

These procedures operate in the financial period under review and, in the case of late payments, the relevant suppliers were notified and the interest due was paid to them.

In accordance with the prompt payment of Account Act, 1997, the following information is provided in respect of the financial period ending December 31st 2013:

#### **(a) Payment Practices**

The Probation Service makes payment to suppliers in accordance with the terms specified in the respective invoices or conditions specified in individual contracts, if appropriate. Since 2002 the standard terms are 30 days.

#### **Late payments:**

Invoice Amount	No. of Invoices	Amount of Interest Paid €
<b>Under €317</b>	10	24.72
<b>Over €317</b>	1	3.01
<b>Total</b>	<b>11</b>	<b>27.73</b>



# Statistics 2013

## Statistics – Overall

Overall	2011	2012	2013
Total number of Offenders dealt with in Community over year <sup>1</sup>	14,845	15,080	15,984
Total court referrals to the Probation Service	9,347	8,790	8,705
Total number of persons referred from courts to the Service <sup>2</sup>	8,135	7,646	7,578

New Referrals From Court	2011	2012	2013
Referral for Probation (Pre-Sanction) Reports	5,299	4,921	5,027
Referral for Community Service Reports	2,577	2,377	2,005
Pre-Sanction Reports to consider Community Service	515	575	692
Orders without prior report	937	902	931
Family Conference	19	15	50

Completed Reports	2011	2012	2013
Probation (Pre-Sanction) Reports <sup>3</sup>	10,710	9,817	9,987
Community Service Reports (Standard) <sup>3</sup>	2,812	2,043	1,857
Community Service Reports (Same Day)	795	963	853
Parole Board - Assessment and Home Circumstances Reports	108	121	50
Repatriation Reports provided to the Department	20	14	19
Victim Impact Reports – Total number of reports Completed	46	55	59
Reports on Life Sentence Prisoners to IPS			74

<sup>1</sup> This includes offenders being dealt with at the beginning of the year in addition to new referrals made during the year. This also includes referrals from IPS (including Community Returns) and repatriated offenders.

<sup>2</sup> The number of orders active at a point in time is greater than the number of offenders as an offender can be subject to more than one order at a point in time.

<sup>3</sup> Please note that this includes all progress reports requested from court in addition to initial assessment reports. This does not include Same Day reports.

## Statistics – Supervision

Supervision	2011	2012	2013
Orders for Supervision during year (Probation Orders)	2,033	1,742	1,640
Orders for Supervision During Deferment of Penalty	1,882	1,695	1,732
Community Service Orders	2,738	2,569	2,354
Fully Suspended Sentence with Supervision	570	599	753
Part Suspended Sentence Supervision Orders	434	389	440
Post Release Supervision Orders	25	43	40
Other Orders <sup>4</sup>	131	131	126
Number of life sentence prisoners supervised in the community <sup>5</sup>	70	73	76
Number of sex offenders supervised in the community <sup>5</sup>	173	209	211

## Statistics – Community Service

Community Service	2011	2012	2013
Referral for Community Service Reports	2,577	2,377	2,005
Pre-Sanction Reports to consider Community Service	515	575	692
Total Reports considering Community Service	3,092	2,952	2,697
Community Service Reports (Same Day)	795	963	853
Community Service Orders made	2,738	2,569	2,354
Total number of Community Service Hours ordered in lieu of custodial sentence	420,836	384,159	352,007
Total alternative sentence in years that would otherwise have been served	1,035	1,053	974

<sup>4</sup> Other Orders includes various disposals under the Children Act 2001 (as amended)

<sup>5</sup> Figure for life sentence prisoners and sex offenders are the total supervised over the year.

## Statistics – Community Returns and Prisons

<b>Community Returns</b>	<b>2012</b>	<b>2013</b>	
Number of offenders on Community Return scheme on December 31 <sup>st</sup>	105	108	
Number of offenders that commenced Community Return over the year	299	396	
Number of successful completions over the year	221	327	
<b>Prisons</b>	<b>2011</b>	<b>2012</b>	<b>2013</b>
Number of prisoners on PSSSO's in prison on December 31 <sup>st</sup>	812	733	664
Number of sex offenders in prison on December 31 <sup>st</sup> that have been in contact with the Probation Service.	336	353	373
Number of new prisoners in contact with Probation Service during year.	499	598	543

## Statistics – Young Persons

<b>New Referrals From Court</b>	<b>2011</b>	<b>2012</b>	<b>2013</b>
Referral for Probation (Pre-Sanction) Reports	877	775	758
Referral for Community Service Reports	22	25	13
Pre-Sanction Reports to consider Community Service	15	4	3
Orders without prior report	13	41	27
Family Conference	19	15	50
<b>Supervision</b>	<b>2011</b>	<b>2012</b>	<b>2013</b>
Probation Orders	350	313	256
Orders for Supervision During Deferment of Penalty	449	340	373
Community Service Orders	44	35	28
Fully Suspended Sentence with Supervision	20	17	4
Part Suspended Sentence Supervision Orders Made	44	54	29
Other Orders <sup>6</sup>	128	129	123

<sup>6</sup> Other Orders includes various disposals under the Children Act 2001 (as amended)

## Age / Gender breakdown of new referrals

Age Category	Gender			%
	Female	Male	Total	Female
12-17	71	627	698	10.2%
18-24	395	2794	3189	12.4%
25-34	413	2414	2827	14.6%
35-44	217	1062	1279	17.0%
45-54	83	439	522	15.9%
>54	27	163	190	14.2%
Total	1206	7499	8705	13.9%

## Supervision – Female offenders

Supervision (Female Offenders)	2011	2012	2013
Probation Orders	378	325	341
Orders for Supervision During Deferment of Penalty <sup>7</sup>	74	281	281
Community Service Orders	210	229	204
Fully Suspended Sentence with Supervision	55	77	104
Part Suspended Sentence Supervision Orders	14	31	28
Other Orders <sup>8</sup>	13	9	20

<sup>7</sup> Figure for supervision during deferment of penalty for female offenders not comparable with 2011 due to different methodology.

<sup>8</sup> Other Orders includes various disposals under the Children Act (as amended).

## Referrals by Venue – 2013

Court Venue	Circuit and Higher Courts	Circuit Court Appeals from District Court	District Court	Total
Dublin (CCJ)	613	87	1140	1840
Juvenile (Smithfield)	.	.	319	319
Chancery Street (Bridewell)	0	0	237	237
CloverHill	1	.	208	209
Dunlaoghaire-District	1	.	208	209
Tallaght	.	.	180	180
Blanchardstown-District	.	.	154	154
Swords	.	.	79	79
Drug Treatment Court	.	.	46	46
Balbriggan	.	.	44	44
Other Dublin Courts	4	.	1	5
<b>Total Dublin (City and County)</b>	<b>619</b>	<b>87</b>	<b>2616</b>	<b>3322</b>

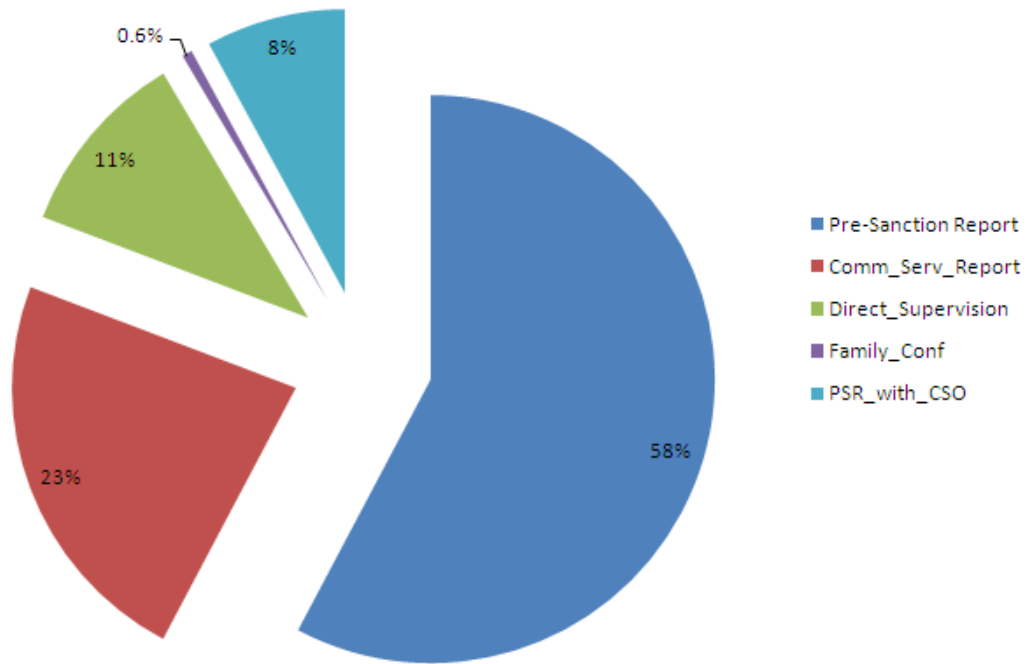
Cork	139	2	511	652
Limerick	35	.	294	329
Dundalk	72	3	148	223
Waterford City	49	9	148	206
Galway City	45	8	141	194
Letterkenny	34	1	140	175
Portlaoise	50	7	112	169
Ennis	24	6	136	166
Tullamore	26	1	132	159
Bray	3	.	153	156
Naas	76	8	72	156
Cavan	22	2	127	151
Wexford	52	3	84	139
Midleton	.	.	123	123
Mullingar	46	4	62	112
Kilkenny	40	4	64	108
Drogheda	.	.	98	98
Castlebar	58	5	33	96
Wicklow	37	.	59	96
Longford	25	2	66	93
Nenagh	19	5	65	89
Clonmel	34	.	49	83
Monaghan	17	2	59	78
Sligo	28	.	48	76
Trim	44	8	20	72

Navan	.	.	65	65
Athlone	.	2	58	60
Mallow	.	.	59	59
Carrickmacross	.	.	58	58
Virginia	.	.	54	54
Gorey	.	.	51	51
Roscommon	33	3	14	50
Carlow-District	13	2	34	49
Tipperary	1	.	48	49
Arklow	.	.	46	46
Fermoy	.	.	44	44
Newcastlewest	.	0	43	43
Thurles	.	.	42	42
Clonakilty	4	.	37	41
Dungarvan	.	1	37	38
Edenderry	.	.	28	28
Tralee	16	3	8	27
Ballinasloe	.	.	26	26
Bandon	1	.	25	26
Kells	.	.	26	26
Kilrush	2	.	22	24
Youghal	.	.	24	24
Carrick-on-Shannon	9	.	13	22
Kinsale	.	.	22	22
Listowel	.	.	22	22
Birr	.	.	21	21
Athy	.	.	20	20
Ballina	.	.	20	20
Bantry	.	.	20	20
Cashel	.	.	20	20
Donegal	5	3	10	18
Macroom	.	.	16	16
Tuam	.	.	16	16
Carrick-on-Suir	.	.	15	15
Abbeyfeale	.	.	13	13
Buncrana	1	.	12	13
Kilcock	.	.	13	13
Killaloe	.	.	13	13
Ardee	.	.	12	12
Loughrea	.	3	9	12

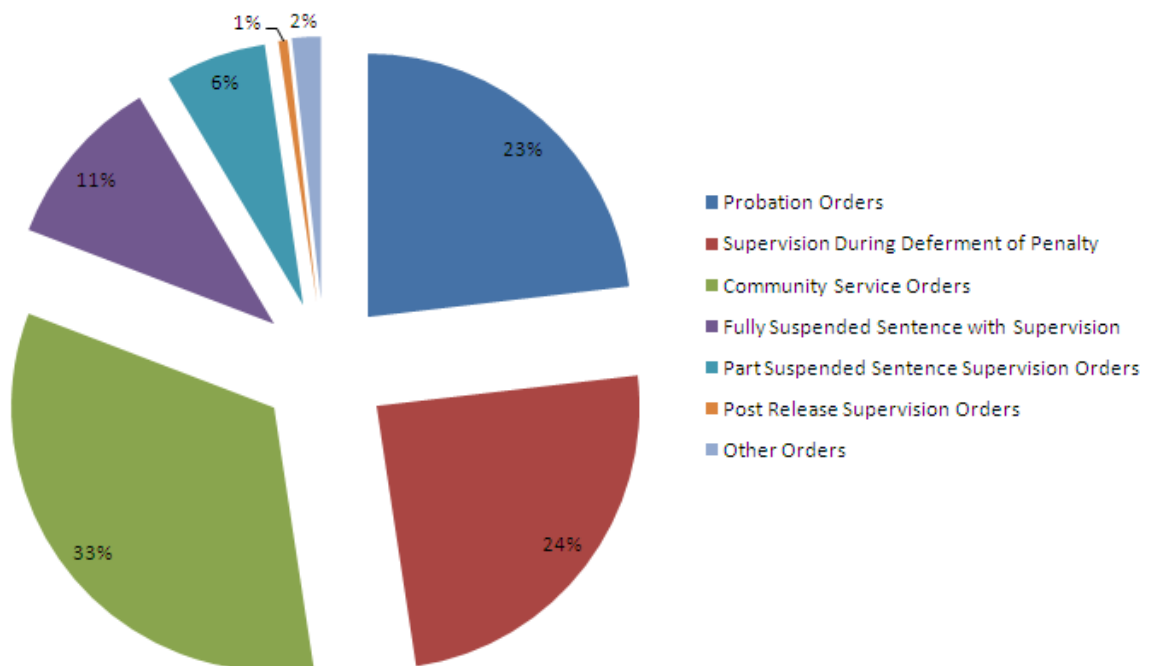
Note: All other courts have made less than 12 referrals in 2013.



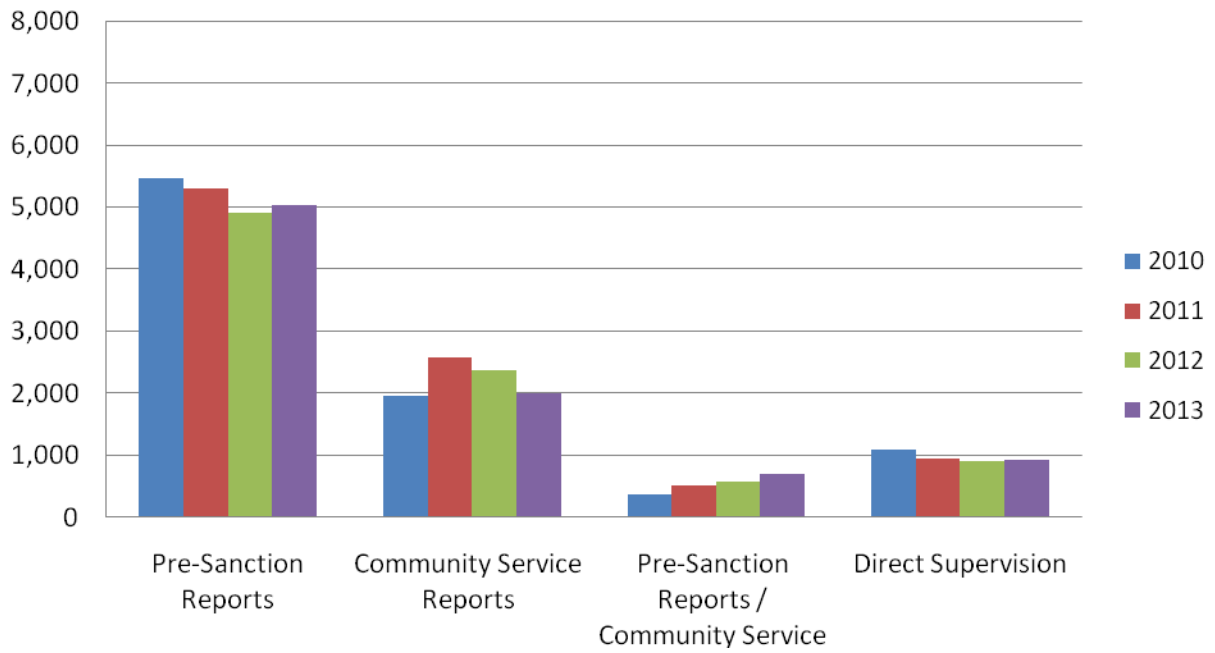
### Breakdown of New Referrals 2013



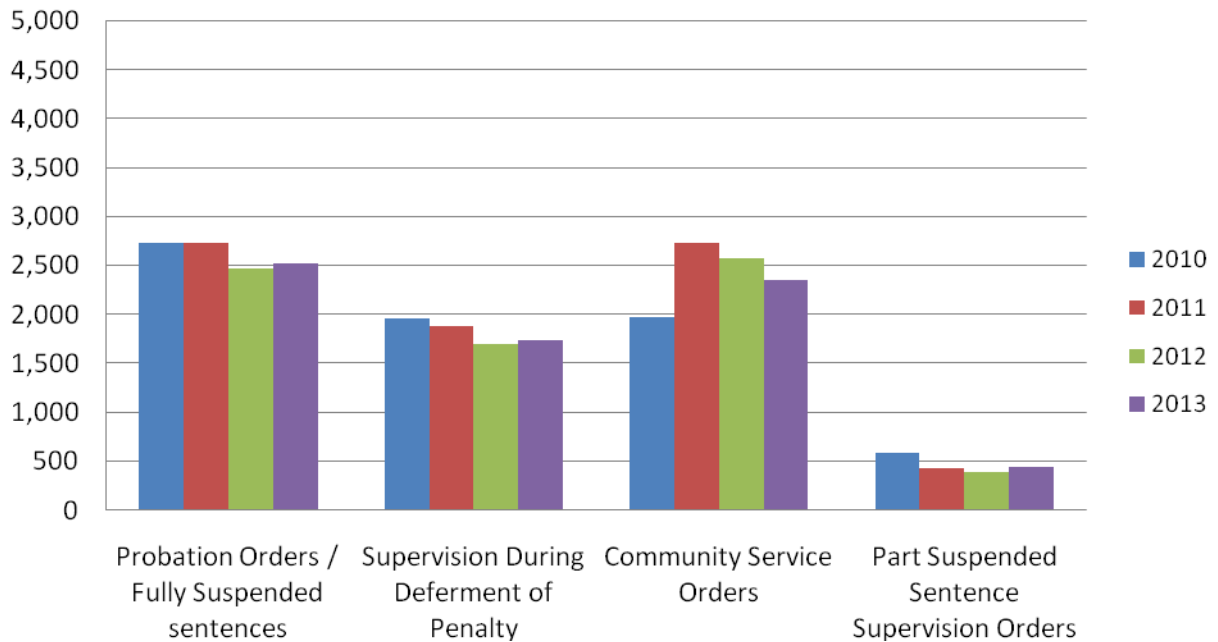
### Breakdown of Court Orders 2013



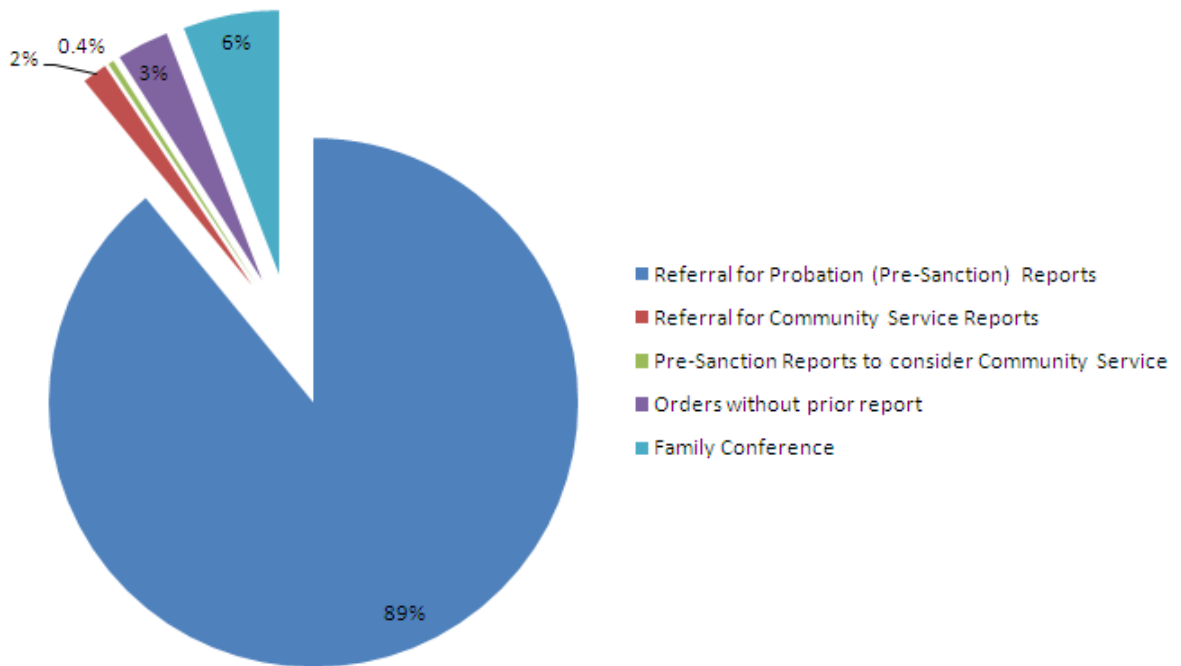
## Trend of Offender Assessment Reports Requested 2010 to 2013



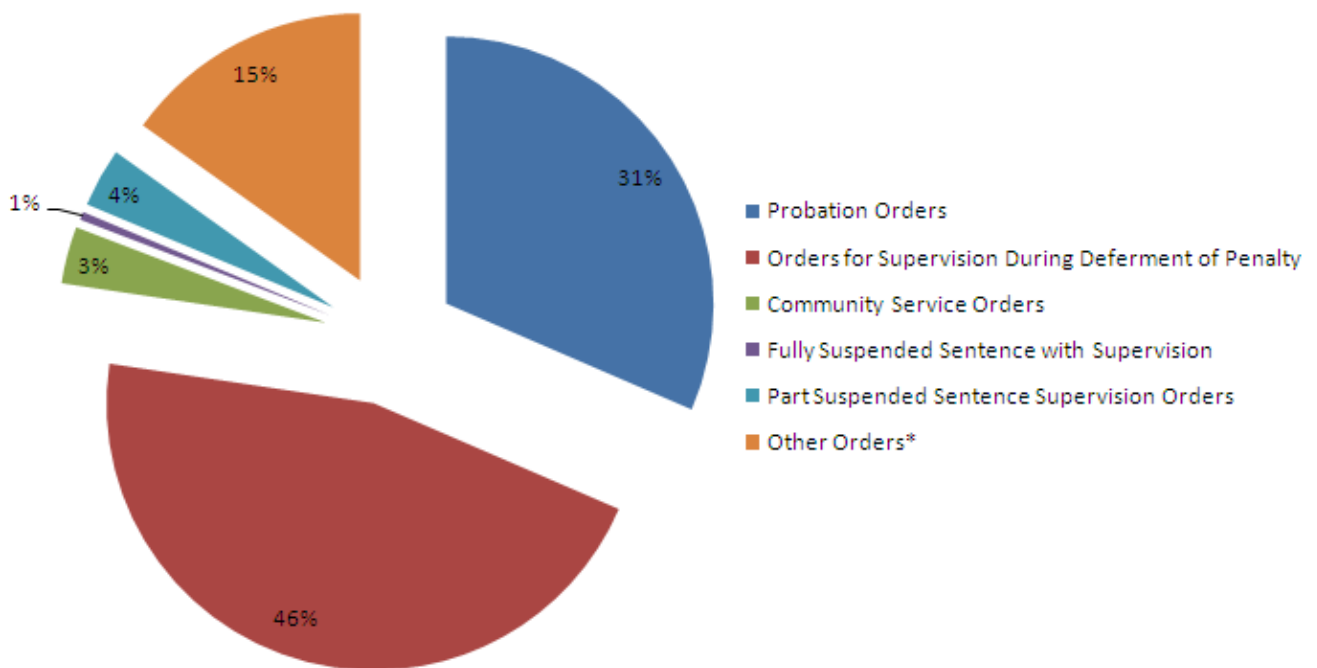
## Trend of Orders Made by Year 2010 to 2013



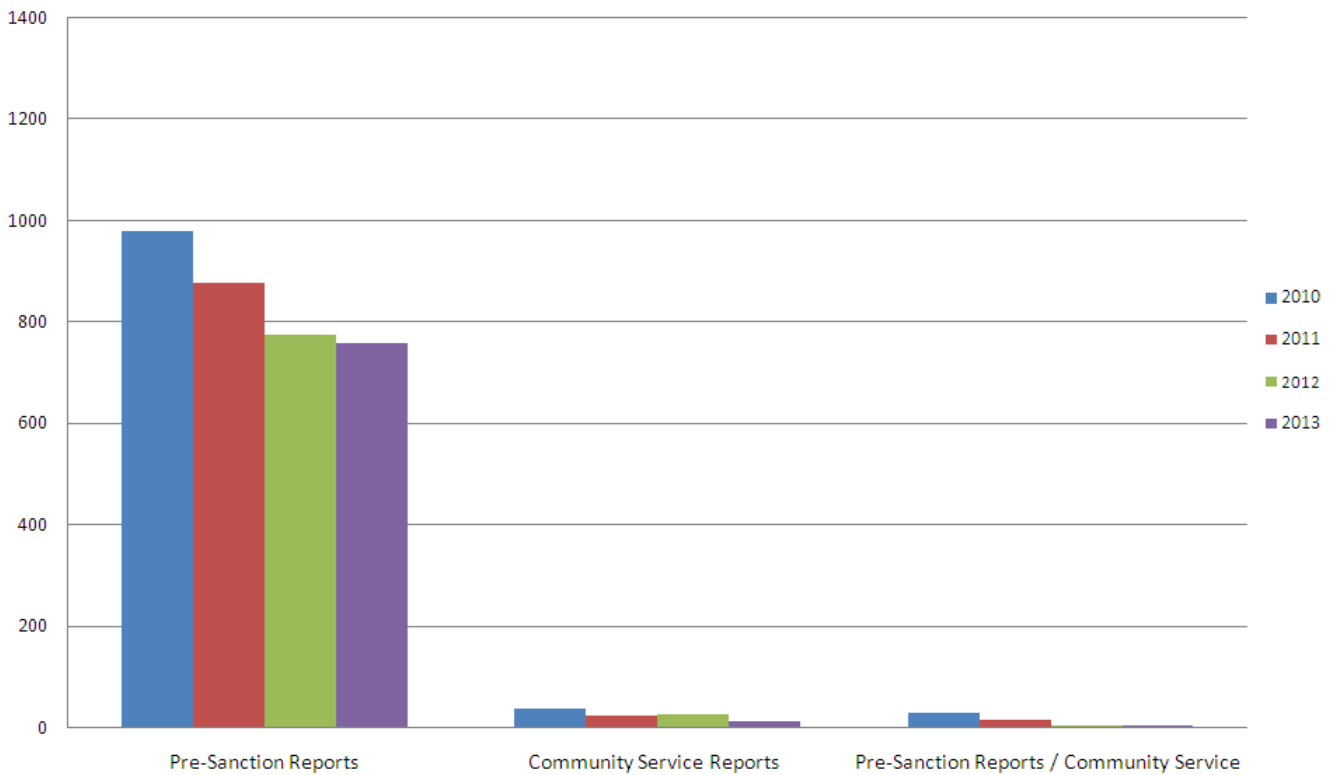
### Breakdown of New Referrals (Young Persons ) 2013



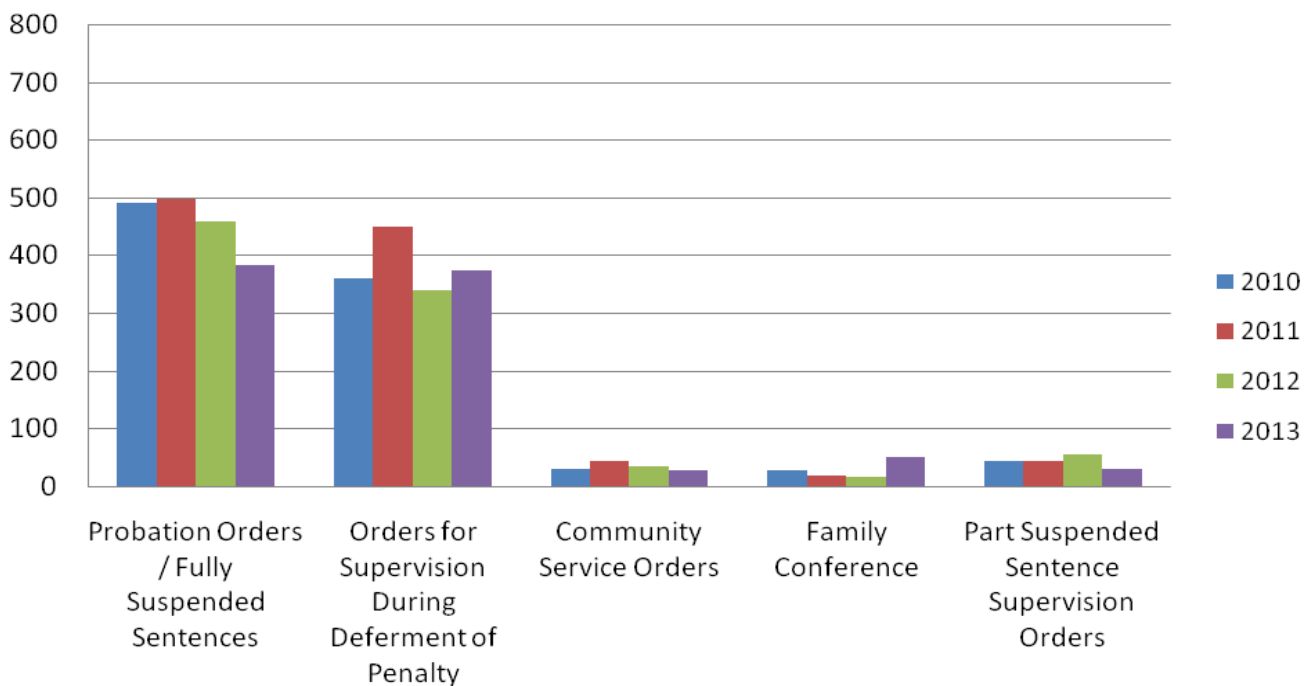
### Breakdown of Court Orders (Young Persons) 2013



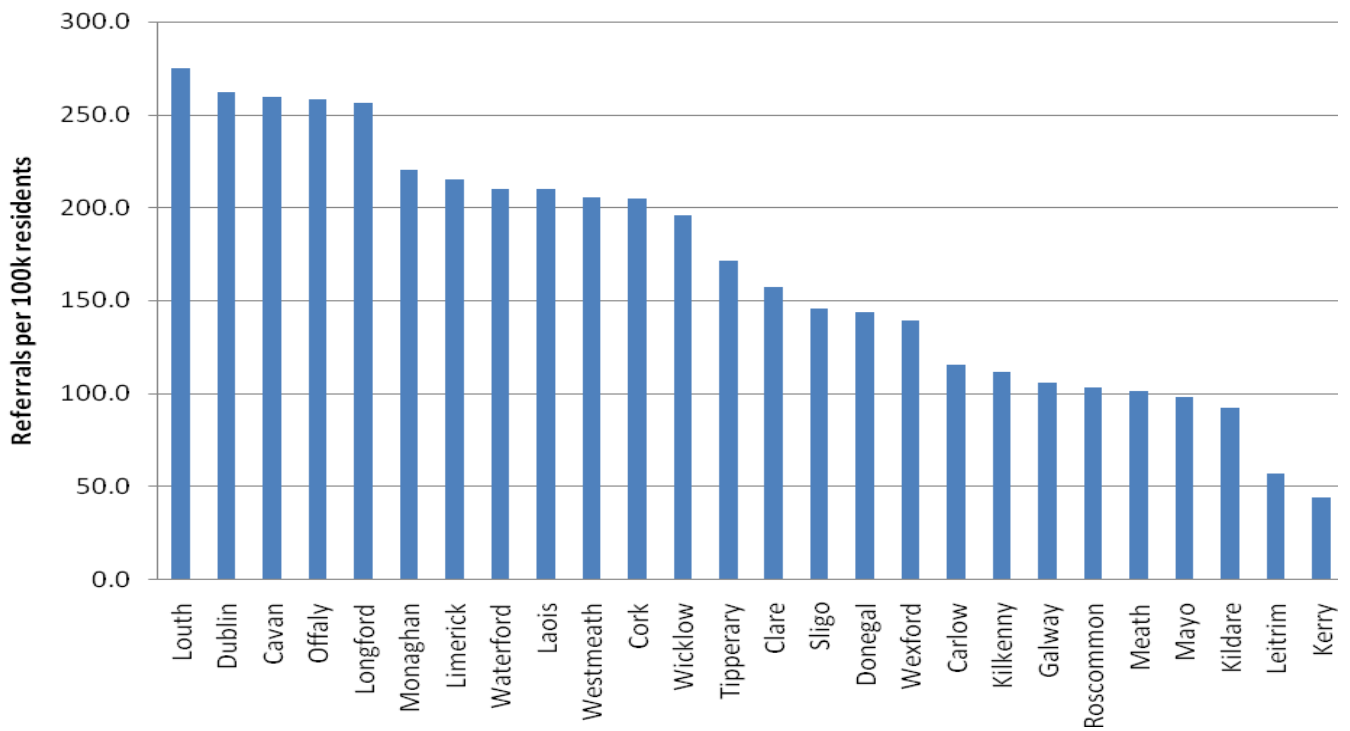
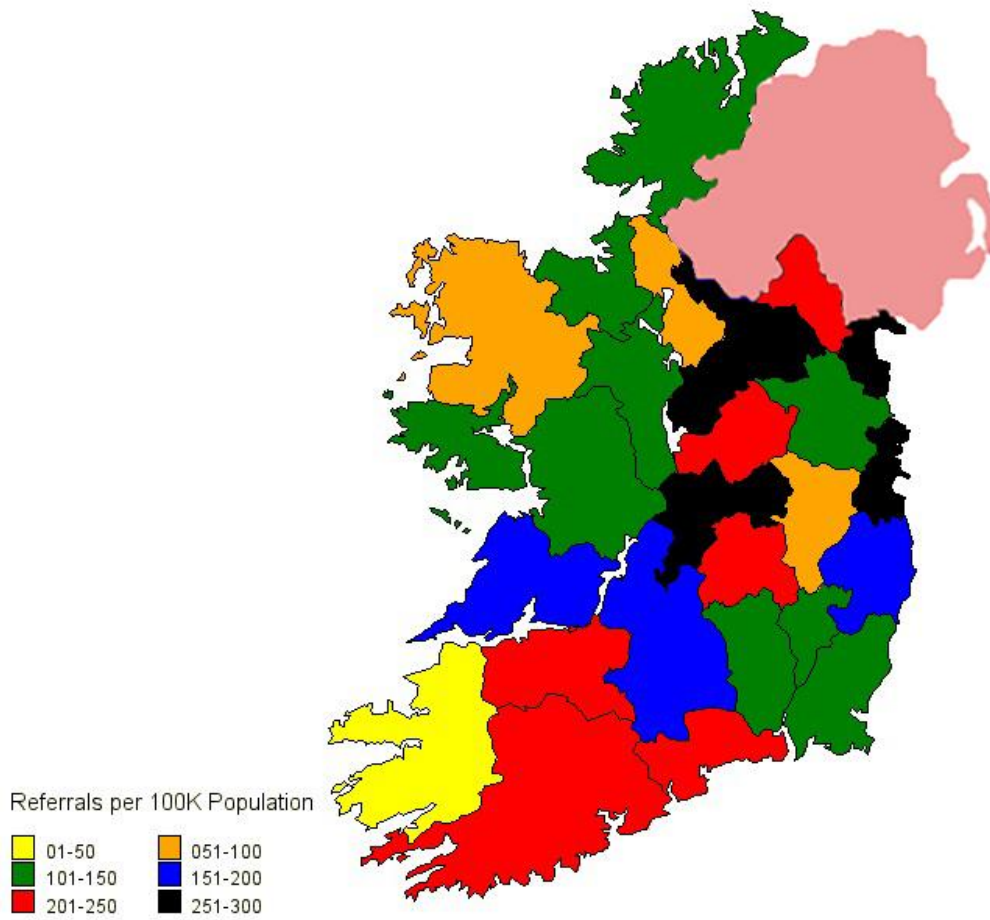
Trend of Offender Assessment Reports Requested (Young Persons)  
2010 to 2013



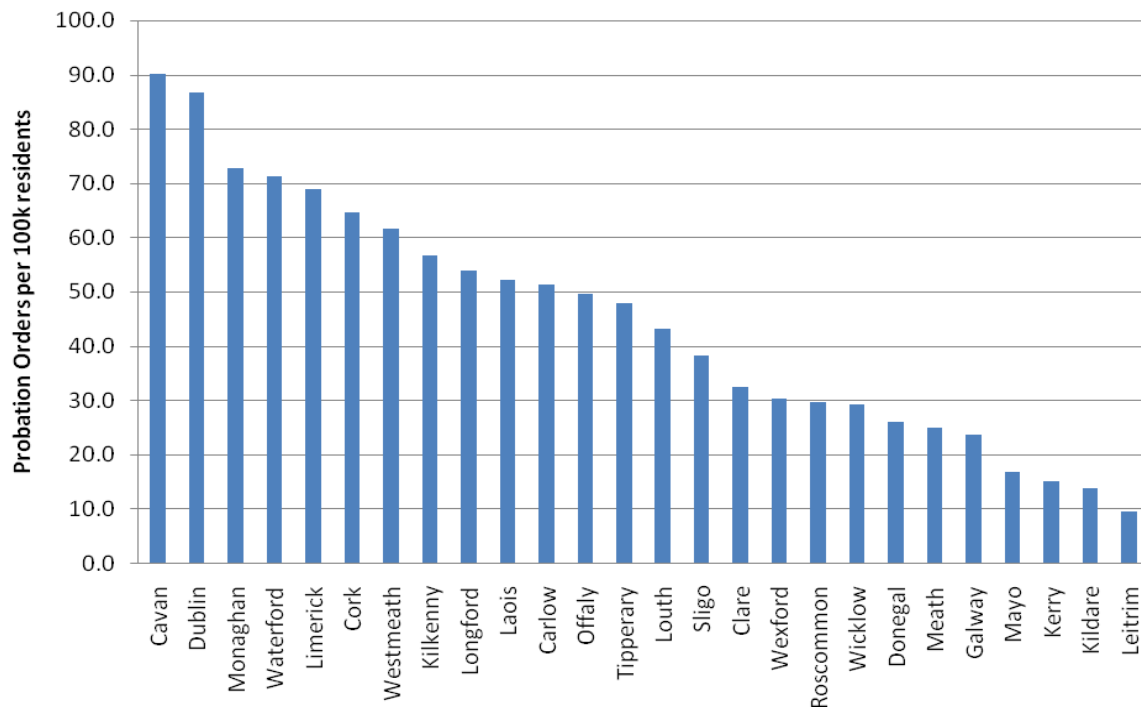
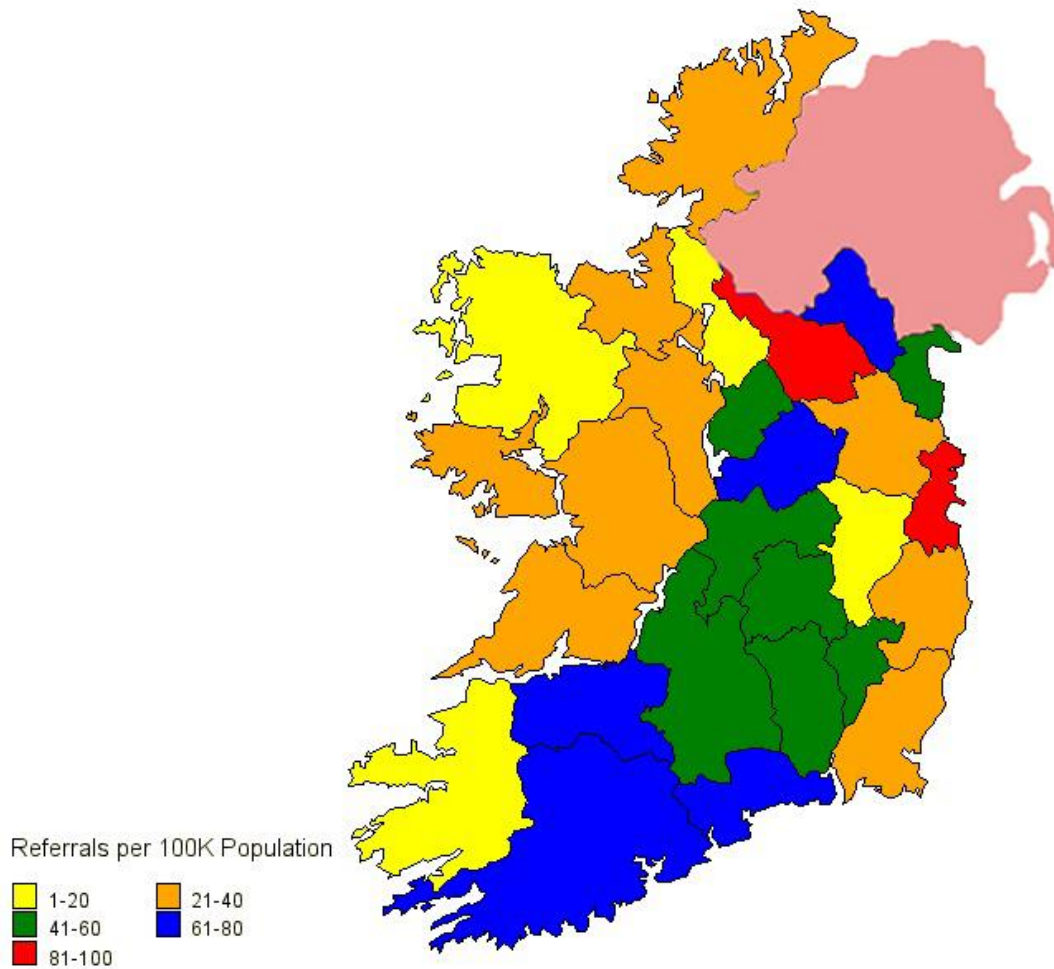
Trend of Orders Made by Year (Young Persons)  
2010 to 2013



## Map of New Referrals in 2013 per 100,000 residents.

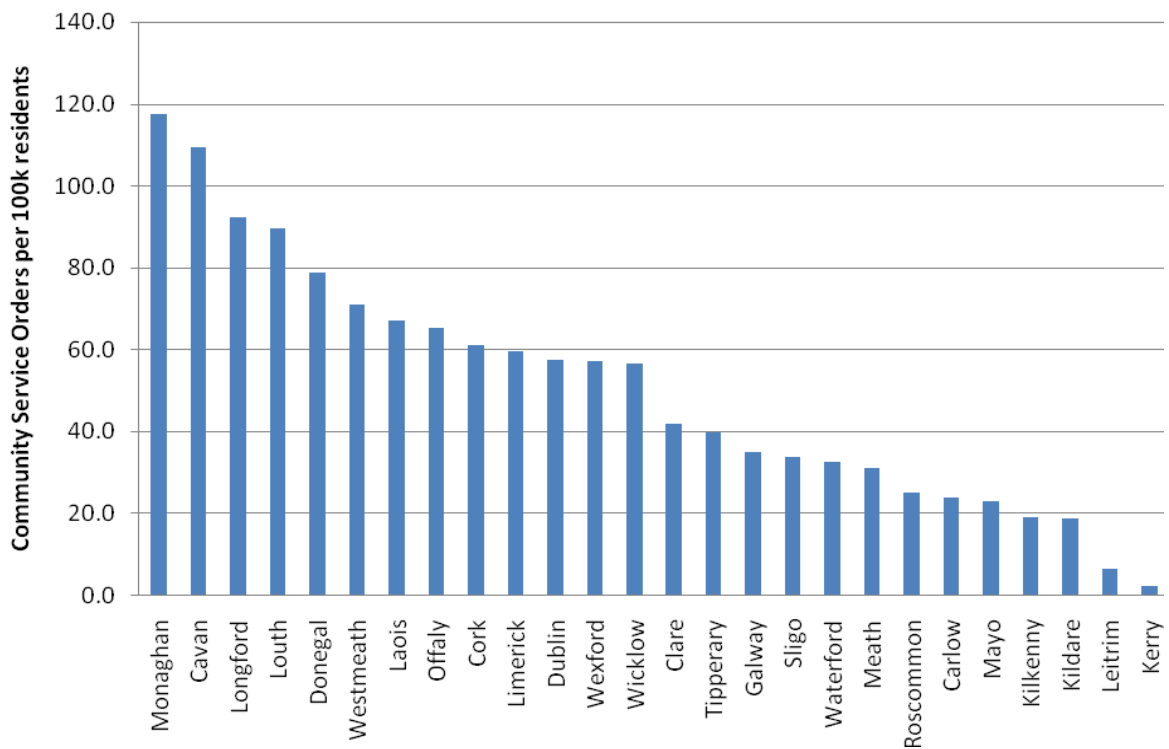
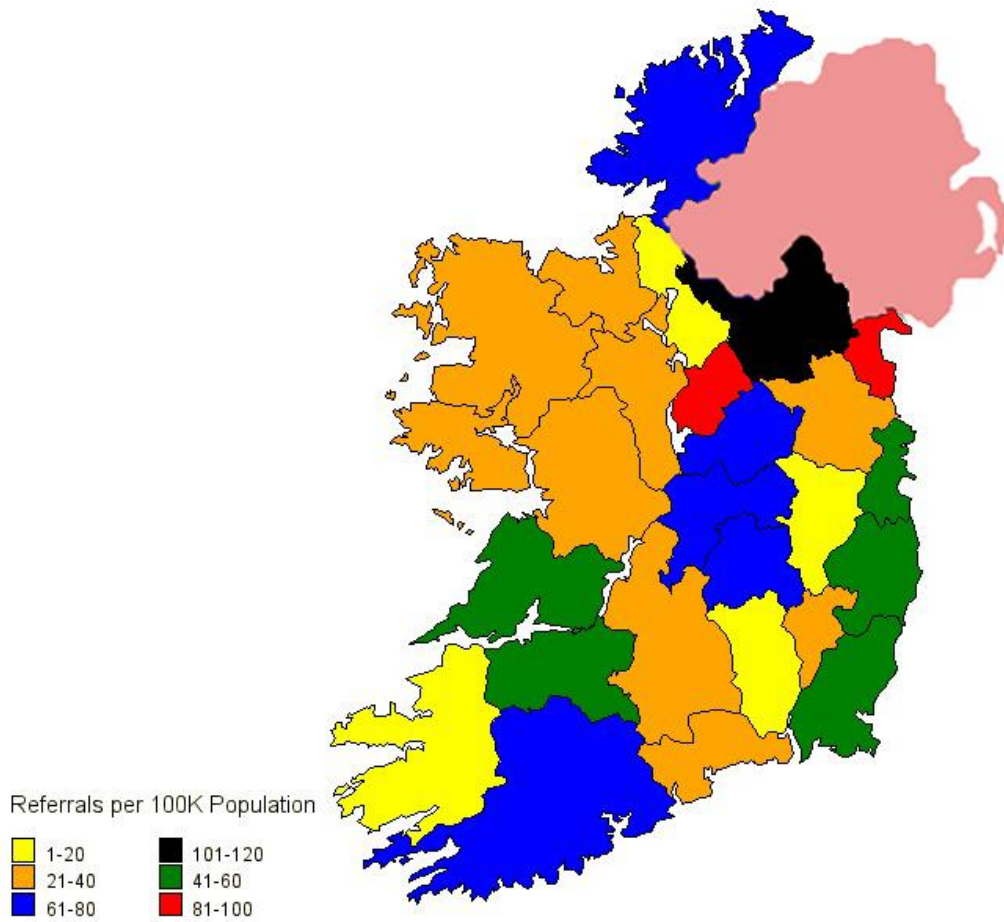


# Map of Probation Orders in 2013 per 100,000 residents.





# Map of Community Service Orders in 2013 per 100,000 residents.



## Community Based Organisations in receipt of funding support through the Probation Service

<b>(1). Adventure Sports Project (YPP)</b>		<b>(2). Aftercare Recovery Group</b>	
<b>Address</b>	School on Stilts, Rutland Street, Dublin 1	<b>Address</b>	48 Seville Place, Dublin 1
<b>Telephone:</b>	01 836 3965	<b>Telephone:</b>	01 855 7611
<b>Fax:</b>	01 855 0065	<b>Fax:</b>	01 855 7611
<b>Email:</b>	<a href="mailto:aspyouthproject@gmail.com">aspyouthproject@gmail.com</a>	<b>Email:</b>	<a href="mailto:tkacrg@gmail.com">tkacrg@gmail.com</a>
<b>Website</b>		<b>Website</b>	
<b>3). Aiseiri Cahir</b>		<b>(4). Aiseiri Wexford</b>	
<b>Address</b>	Townspark, Cahir, Co Tipperary	<b>Address</b>	Roxborough, Wexford, Co. Wexford
<b>Telephone:</b>	052 741 166	<b>Telephone:</b>	053 914 1818
<b>Fax:</b>	052 744 2250	<b>Fax:</b>	053 914 6004
<b>Email:</b>	<a href="mailto:infocahir@aiseiri.ie">infocahir@aiseiri.ie</a>	<b>Email:</b>	<a href="mailto:wexford@aiseiri.ie">wexford@aiseiri.ie</a>
<b>Website</b>	<a href="http://www.aiseiri.ie">www.aiseiri.ie</a>	<b>Website</b>	<a href="http://www.aiseiri.ie">www.aiseiri.ie</a>
<b>(5). Aislinn(YPP)</b>		<b>(6). Ana Liffey Project</b>	
<b>Address</b>	Ballyragget, Co Kilkenny	<b>Address</b>	48 Middle Abbey Street, Dublin 1
<b>Telephone:</b>	056 883 3777	<b>Telephone:</b>	01 878 6899
<b>Fax:</b>	056 883 3780	<b>Fax:</b>	01 878 6828
<b>Email:</b>	<a href="mailto:info@aislinncentre.com">info@aislinncentre.com</a>	<b>Email:</b>	<a href="mailto:info@aldp.ie">info@aldp.ie</a>
<b>Website</b>	<a href="http://www.aislinn.ie">www.aislinn.ie</a>	<b>Website</b>	<a href="http://www.aldp.ie">www.aldp.ie</a>

<b>(7). Athy Alternative Project</b>	
<b>Address</b>	Community Service Centre, Nelson Street, Athy, Co Kildare
<b>Telephone:</b>	059 863 2354
<b>Fax:</b>	059 8632067
<b>Email:</b>	<a href="mailto:aap1@eircom.net">aap1@eircom.net</a>
<b>Website</b>	

<b>(8). Ballinasloe Training Workshop</b>	
<b>Address</b>	Canal House, Harbour Road, Ballinasloe, Co Galway
<b>Telephone:</b>	090 964 3231
<b>Fax:</b>	090 964 4273
<b>Email:</b>	<a href="mailto:canalhouse@eircom.net">canalhouse@eircom.net</a>
<b>Website</b>	<a href="http://www.canalhouse.ie">www.canalhouse.ie</a>

<b>(9). Ballymun Youth Action Project</b>	
<b>Address</b>	Horizons Centre, Balcurris Road, Ballymun, Dublin 11
<b>Telephone:</b>	01 842 8071
<b>Fax:</b>	01 846 7901
<b>Email:</b>	<a href="mailto:info@byap.ie">info@byap.ie</a>
<b>Website</b>	<a href="http://www.byap.ie">www.byap.ie</a>

<b>(10). Bridge Project</b>	
<b>Address</b>	Unit 3 Business Centre, 124 Parnell Street, Dublin 1
<b>Telephone:</b>	01 878 0901
<b>Fax:</b>	01 878 0896
<b>Email:</b>	<a href="mailto:manager@bridge.ie">manager@bridge.ie</a>
<b>Website</b>	

<b>(11). Bushypark (Clarecare)</b>	
<b>Address</b>	Bushypark House, Bushypark, Ennis, Co Clare
<b>Telephone:</b>	056 684 0944
<b>Fax:</b>	065 684 0450
<b>Email:</b>	<a href="mailto:bushyparkhouse@clarecare.ie">bushyparkhouse@clarecare.ie</a>
<b>Website</b>	<a href="http://www.bushypark.ie">www.bushypark.ie</a>

<b>(12). Candle Community Trust (YPP)</b>	
<b>Address</b>	PO Box 1145, Lynch's Lane, Ballyfermot, Dublin 10
<b>Telephone:</b>	01 626 9111/2
<b>Fax:</b>	01 626 9379
<b>Email:</b>	<a href="mailto:bjohnston@candletrust.ie">bjohnston@candletrust.ie</a>
<b>Website</b>	<a href="http://www.candletrust.ie">www.candletrust.ie</a>

<b>(13). Ceim ar Cheim (YPP)</b>	
<b>Address</b>	Unit 5 Shannon Development Units, Knockalisheen Road, Moyross, Co Limerick
<b>Telephone:</b>	061 322 122
<b>Fax:</b>	061 322 203
<b>Email:</b>	<a href="mailto:slatteryelaine@gmail.com">slatteryelaine@gmail.com</a>
<b>Website</b>	

<b>(14). Ceim Eile (Aiseiri)</b>	
<b>Address</b>	1 Glencarra, Ballybeg, Waterford, Co Waterford
<b>Telephone:</b>	051 370 007
<b>Fax:</b>	
<b>Email:</b>	<a href="mailto:mhennessy@aiseiri.ie">mhennessy@aiseiri.ie</a>
<b>Website</b>	<a href="http://www.aiseiri.ie">www.aiseiri.ie</a>

<b>(15). Churchfield Community Trust</b>	
<b>Address</b>	107-109 Knockfree Avenue, Churchfield, Cork City, Co Cork
<b>Telephone:</b>	021 421 0348
<b>Fax:</b>	021 421 0034
<b>Email:</b>	<a href="mailto:cctrust@eircom.net">cctrust@eircom.net</a>
<b>Website</b>	<a href="http://www.churchfieldcommunitytrust.com">www.churchfieldcommunitytrust.com</a>

<b>(16). Coolmine Therapeutic Community</b>	
<b>Address</b>	Ashleigh House, The Stables, Damastown, Dublin 15
<b>Telephone:</b>	01 640 4087
<b>Fax:</b>	01 640 4085
<b>Email:</b>	<a href="mailto:info@coolminetc.ie">info@coolminetc.ie</a>
<b>Website</b>	<a href="http://www.coolminetc.ie">www.coolminetc.ie</a>

<b>(17). Cork Alliance Centre</b>	
<b>Address</b>	Robert Scott House, 6 Patrick's Quay, Cork City, Co Cork
<b>Telephone:</b>	021 455 7878
<b>Fax:</b>	021 455 7880
<b>Email:</b>	<a href="mailto:corkalliancecentre@eircom.net">corkalliancecentre@eircom.net</a>
<b>Website</b>	<a href="http://www.corkalliancecentre.com">www.corkalliancecentre.com</a>

<b>(18). Cornmarket Project Wexford Local Development</b>	
<b>Address</b>	9 Mallin Street, Cornmarket, Wexford, Co Wexford
<b>Telephone:</b>	053 915 5800
<b>Fax:</b>	053 912 1024
<b>Email:</b>	<a href="mailto:pdelaney@wld.ie">pdelaney@wld.ie</a>
<b>Website</b>	<a href="http://www.wexfordpartnership.ie">www.wexfordpartnership.ie</a>

<b>(19). Cox's Demesne (YPP)</b>	
<b>Address</b>	The House, 15-16 Oakland Park, Dundalk, Co Louth
<b>Telephone:</b>	042 933 0432
<b>Fax:</b>	042 933 1599
<b>Email:</b>	<a href="mailto:coxscydp@iol.ie">coxscydp@iol.ie</a>
<b>Website</b>	<a href="http://www.coxsdemesne-thehouse.com">www.coxsdemesne-thehouse.com</a>

<b>(20). Crinan</b>	
<b>Address</b>	72 Sean McDermott Street, Dublin 1
<b>Telephone:</b>	01 855 8792
<b>Fax:</b>	01 855 2320
<b>Email:</b>	<a href="mailto:info@crinanyp.org">info@crinanyp.org</a>
<b>Website</b>	<a href="http://www.crinanyp.org">www.crinanyp.org</a>

<b>(21). Cuan Mhuire Athy</b>	
<b>Address</b>	Milltown, Athy, Co. Kildare
<b>Telephone:</b>	059 863 1493
<b>Fax:</b>	059 863 8765
<b>Email:</b>	<a href="mailto:athy@cuanmhuire.ie">athy@cuanmhuire.ie</a>
<b>Website</b>	<a href="http://www.cuanmhuire.ie">www.cuanmhuire.ie</a>

<b>(22). Cuan Mhuire Bruree</b>	
<b>Address</b>	Bruree, Co Limerick
<b>Telephone:</b>	063 90555
<b>Fax:</b>	063 90555
<b>Email:</b>	<a href="mailto:bruree@cuanmhuire.ie">bruree@cuanmhuire.ie</a>
<b>Website</b>	<a href="http://www.cuanmhuire.ie">www.cuanmhuire.ie</a>

<b>(23). Cuan Mhuire Coolarne</b>	
<b>Address</b>	Coolarne, Turloughmore, Co Galway
<b>Telephone:</b>	091 79 7102
<b>Fax:</b>	091 78 7458
<b>Email:</b>	<a href="mailto:coolarne@cuanmhuire.ie">coolarne@cuanmhuire.ie</a>
<b>Website</b>	<a href="http://www.cuanmhuire.ie">www.cuanmhuire.ie</a>

<b>(24). Cuan Mhuire Farnanes</b>	
<b>Address</b>	Farnanes, Co Cork
<b>Telephone:</b>	021 733 5994
<b>Fax:</b>	021 733 6377
<b>Email:</b>	<a href="mailto:farnanes@cuanmhuire.ie">farnanes@cuanmhuire.ie</a>
<b>Website</b>	<a href="http://www.cuanmhuire.ie">www.cuanmhuire.ie</a>

<b>(25). Daughters of Charity Community Services (YPP)</b>	
<b>Address</b>	8/9 Henrietta Street, Dublin 1
<b>Telephone:</b>	01 887 4100
<b>Fax:</b>	01 872 3486
<b>Email:</b>	<a href="mailto:info@doccs.ie">info@doccs.ie</a>
<b>Website</b>	<a href="http://www.doccs.ie">www.doccs.ie</a>

<b>(26). Dochas don Oige (YPP)</b>	
<b>Address</b>	Liosban Industrial Estate, Tuam Road, Galway, Co Galway
<b>Telephone:</b>	091 77 0887
<b>Fax:</b>	091 77 0899
<b>Email:</b>	<a href="mailto:dochasgalway@eircom.net">dochasgalway@eircom.net</a>
<b>Website</b>	

<b>(27). Educational Trust</b>	
<b>Address</b>	c/o Block 3, Grove Court, Grove Road, Blanchardstown, Dublin 15
<b>Telephone:</b>	01 823 1000
<b>Fax:</b>	01 823 1022
<b>Email:</b>	<a href="mailto:headoffice@paceorganisation.ie">headoffice@paceorganisation.ie</a>
<b>Website</b>	<a href="http://www.paceorganisation.ie">www.paceorganisation.ie</a> or <a href="http://www.niacro.co.uk">www.niacro.co.uk</a>

<b>(28). Fellowship House</b>	
<b>Address</b>	Spur Hill, Doughcloyne, Togher, Cork City, Co Cork
<b>Telephone:</b>	021 454 5894
<b>Fax:</b>	021 434 4471
<b>Email:</b>	<a href="mailto:fellowship@eircom.net">fellowship@eircom.net</a>
<b>Website</b>	<a href="http://www.taborlodge.ie">www.taborlodge.ie</a>

<b>(29). Fusion CPL</b>	
<b>Address</b>	Cherry Orchard Health Centre, Cherry Orchard Grove, Dublin 10
<b>Telephone:</b>	01 623 1499
<b>Fax:</b>	01 623 1518
<b>Email:</b>	<a href="mailto:info@fusioncpl.ie">info@fusioncpl.ie</a>
<b>Website</b>	<a href="http://www.fusioncpl.ie">www.fusioncpl.ie</a>

<b>(30). GROW</b>	
<b>Address</b>	National Support Office, 6 Forrest Mews, Forrest Road, Swords, Co Dublin
<b>Telephone:</b>	01 840 8236
<b>Fax:</b>	01 840 8244
<b>Email:</b>	<a href="mailto:info@grow.ie">info@grow.ie</a>
<b>Website</b>	<a href="http://www.grow.ie">www.grow.ie</a>

<b>(31). Grattan House Project</b>	
<b>Address</b>	St Nicholas Church, Cove Street, Cork City, Co Cork
<b>Telephone:</b>	021 483 6700
<b>Fax:</b>	021 484 5146
<b>Email:</b>	<a href="mailto:liz.grattanproject@gmail.com">liz.grattanproject@gmail.com</a>
<b>Website</b>	

<b>(32). Guild of St Philip Neri</b>	
<b>Address</b>	St Vincent De Paul, 91-92 Sean McDermott Street, Dublin 1
<b>Telephone:</b>	01 855 0022
<b>Fax:</b>	01 855 9168
<b>Email:</b>	<a href="mailto:info@svpdublin.ie">info@svpdublin.ie</a>
<b>Website</b>	<a href="http://www.svp.ie">www.svp.ie</a>

<b>(33). Job Sampling Initiative</b>	
<b>Address</b>	St Brigid's Family and Community Centre, 37 Lower Yellow Road, Waterford, Co Waterford
<b>Telephone:</b>	051 371 830
<b>Fax:</b>	
<b>Email:</b>	<a href="mailto:yfirth@wap.ie">yfirth@wap.ie</a>
<b>Website</b>	<a href="http://www.wap.ie/job-sampling-initiative.aspx">www.wap.ie/job-sampling- initiative.aspx</a>

<b>(34). Kerry Adolescent Counselling (YPP)</b>	
<b>Address</b>	Balloonagh, Tralee, Co Kerry
<b>Telephone:</b>	066 718 1333
<b>Fax:</b>	066 718 1353
<b>Email:</b>	<a href="mailto:info@kerryadolescentcounselling.ie">info@kerryadolescentcounselling.ie</a>
<b>Website</b>	<a href="http://www.kerryadolescentcounselling.ie">www.kerryadolescentcounselling.ie</a>



**(35). Kilkenny Employment for Youth**

<b>Address</b>	Garden Row, Off High Street, Kilkenny, Co Kilkenny
<b>Telephone:</b>	056 776 2774
<b>Fax:</b>	056 775 1144
<b>Email:</b>	<a href="mailto:key1@eircom.net">key1@eircom.net</a>
<b>Website</b>	

**(37). Le Cheile (YPP)**

<b>Address</b>	24 Tivoli Terrace South, Dun Laoghaire, Co. Dublin
<b>Telephone:</b>	01 214 4350
<b>Fax:</b>	
<b>Email:</b>	<a href="mailto:info@lecheile.ie">info@lecheile.ie</a>
<b>Website</b>	<a href="http://www.lecheile.ie">www.lecheile.ie</a>

**(39).Matt Talbot Adolescent Services (YPP)**

<b>Address</b>	Cara Lodge Residential Treatment Centre, Ahiohill, Enniskeane, Co Cork
<b>Telephone:</b>	023 883 9000
<b>Fax:</b>	023 883 9590
<b>Email:</b>	<a href="mailto:infocaralodge@mtas.ie">infocaralodge@mtas.ie</a>
<b>Website</b>	<a href="http://www.mtas.ie">www.mtas.ie</a>

**(36). IASIO (Linkage Programme)**

<b>Address</b>	Block 3, Grove Court, Grove Road, Blanchardstown, Dublin 15.
<b>Telephone:</b>	01 866 2722
<b>Fax:</b>	
<b>Email:</b>	<a href="mailto:prichardson@iasio.ie">prichardson@iasio.ie</a>
<b>Website</b>	<a href="http://www.iasio.ie">www.iasio.ie</a>

**(38). Matt Talbot Adolescent Services (YPP)**

<b>Address</b>	Rockview, Trabeg Lawn, Douglas, Co Cork
<b>Telephone:</b>	021 489 6400
<b>Fax:</b>	021 489 6419
<b>Email:</b>	<a href="mailto:infotrabeg@mtas.ie">infotrabeg@mtas.ie</a>
<b>Website</b>	<a href="http://www.mtas.ie">www.mtas.ie</a>

**(40). Matt Talbot Community Trust**

<b>Address</b>	Rear of Assumption Church, Kylemore Road, Dublin 10
<b>Telephone:</b>	01 626 4899
<b>Fax:</b>	01 623 4021
<b>Email:</b>	<a href="mailto:info@MattTalbot.org">info@MattTalbot.org</a>
<b>Website</b>	<a href="http://www.matttalbot.org">www.matttalbot.org</a>

<b>(41). Merchants Quay Project</b>	
<b>Address</b>	4 Merchants Quay, Dublin 8
<b>Telephone:</b>	01 679 0044
<b>Fax:</b>	01 679 3738
<b>Email:</b>	<a href="mailto:info@mqi.ie">info@mqi.ie</a>
<b>Website</b>	<a href="http://www.mqi.ie">www.mqi.ie</a>

<b>(43). PALLS</b>	
<b>Address</b>	Unit 2, Docklands Business Park, Dock Road, Limerick, Co Limerick
<b>Telephone:</b>	061 608 180
<b>Fax:</b>	061 608 187
<b>Email:</b>	<a href="mailto:jenniferhannon@palls.ie">jenniferhannon@palls.ie</a>
<b>Website</b>	

<b>(45). Restorative Justice Services</b>	
<b>Address</b>	Village Green, Tallaght, Dublin 24
<b>Telephone:</b>	01 451 5022
<b>Fax:</b>	01 451 5025
<b>Email:</b>	<a href="mailto:rjsi@eircom.net">rjsi@eircom.net</a>
<b>Website</b>	<a href="http://www.rjs.ie">www.rjs.ie</a>

<b>(42). PACE</b>	
<b>Address</b>	Block 3, Grove Court, Grove Road, Blanchardstown, Dublin 15.
<b>Telephone:</b>	01 823 1000
<b>Fax:</b>	01 823 1022
<b>Email:</b>	<a href="mailto:headoffice@paceorganisation.ie">headoffice@paceorganisation.ie</a>
<b>Website</b>	<a href="http://www.paceorganisation.ie">www.paceorganisation.ie</a>

<b>(44). Restorative Justice in the Community</b>	
<b>Address</b>	Connolly Street, Nenagh, Co Tipperary
<b>Telephone:</b>	067 415 65
<b>Fax:</b>	067 415 65
<b>Email:</b>	<a href="mailto:ncrp@eircom.net">ncrp@eircom.net</a>
<b>Website</b>	

<b>(46). SAOL Project</b>	
<b>Address</b>	58 Amiens Street, Dublin 1
<b>Telephone:</b>	01 855 3391
<b>Fax:</b>	01 855 3395
<b>Email:</b>	<a href="mailto:admin@saolproject.ie">admin@saolproject.ie</a>
<b>Website</b>	<a href="http://www.saolproject.ie">www.saolproject.ie</a>

<b>(47). Southill Outreach (YPP)</b>	
<b>Address</b>	The Factory, Southside Youthspace, Galvone Industrial Estate, Limerick, Co Limerick
<b>Telephone:</b>	061 603 002
<b>Fax:</b>	
<b>Email:</b>	<a href="mailto:admin@southilloutreach.ie">admin@southilloutreach.ie</a>
<b>Website</b>	

<b>(49). Tabor Lodge</b>	
<b>Address</b>	Ballindeasig, Belgooly, Co Cork
<b>Telephone:</b>	021 488 7110
<b>Fax:</b>	021 488 7377
<b>Email:</b>	<a href="mailto:taborlodge@eircom.net">taborlodge@eircom.net</a>
<b>Website</b>	<a href="http://www.taborlodge.ie">www.taborlodge.ie</a>

<b>(51). Tivoli Training Centre</b>	
<b>Address</b>	24 Tivoli Terrace South, Dun Laoghaire, Co Dublin
<b>Telephone:</b>	01 284 1028
<b>Fax:</b>	01 280 2699
<b>Email:</b>	<a href="mailto:info@tivolitrainingcentre.ie">info@tivolitrainingcentre.ie</a>
<b>Website</b>	<a href="http://www.tivolitrainingcentre.ie">www.tivolitrainingcentre.ie</a>

<b>(53). Trail</b>	
<b>Address</b>	12-13 Berkley Street, Dublin 7.
<b>Telephone:</b>	01 830 8335
<b>Fax:</b>	01 830 8335
<b>Email:</b>	
<b>Website</b>	

<b>(48). Stepping Out Athlone</b>	
<b>Address</b>	National Learning Network, Belhavel, Golden Island, Athlone, Co Westmeath
<b>Telephone:</b>	090 644 1267
<b>Fax:</b>	090 647 9290
<b>Email:</b>	<a href="mailto:steppingout@eircom.net">steppingout@eircom.net</a>
<b>Website</b>	

<b>(50). Tallaght Probation Project</b>	
<b>Address</b>	Courthouse Square, Westpark, Tallaght, Dublin 24
<b>Telephone:</b>	01 427 0600
<b>Fax:</b>	01 427 0649
<b>Email:</b>	<a href="mailto:project@tpp.ie">project@tpp.ie</a>
<b>Website</b>	

<b>(52). Tower Programme</b>	
<b>Address</b>	Cusack House, St Mark's Lane, Neilstown Road, Clondalkin, Dublin 22
<b>Telephone:</b>	01 623 6230
<b>Fax:</b>	01 623 6237
<b>Email:</b>	<a href="mailto:info@towerprogramme.ie">info@towerprogramme.ie</a>
<b>Website</b>	

<b>(54). TREO</b>	
<b>Address</b>	34 Tycor Business Centre, Tycor, Waterford, Co Waterford
<b>Telephone:</b>	051 379 740
<b>Fax:</b>	051 379 740
<b>Email:</b>	<a href="mailto:admin@treoportlairge.ie">admin@treoportlairge.ie</a>
<b>Website</b>	<a href="http://www.treoportlairge.ie">www.treoportlairge.ie</a>

<b>(55).Tuam Community Training Workshop</b>	
<b>Address</b>	Vicharschoraland, Tuam, Co Galway
<b>Telephone:</b>	093 28 115
<b>Fax:</b>	093 25 673
<b>Email:</b>	<a href="mailto:tctc@eircom.net">tctc@eircom.net</a>
<b>Website</b>	

<b>(56). Tus Nua</b>	
<b>Address</b>	136 North Circular Road, Dublin 7
<b>Telephone:</b>	01 453 7111
<b>Fax:</b>	01 453 7551
<b>Email:</b>	<a href="mailto:depaul@depaulireland.org">depaul@depaulireland.org</a>
<b>Website</b>	<a href="http://www.depaulireland.org">www.depaulireland.org</a>

<b>(57). U-Casadh Project</b>	
<b>Address</b>	Solas Building, Belmont Park, Ferrybank, Co Waterford
<b>Telephone:</b>	051 841 740
<b>Fax:</b>	051 853 153
<b>Email:</b>	<a href="mailto:stephen@ucasadh.ie">stephen@ucasadh.ie</a>
<b>Website</b>	<a href="http://www.ucasadh.com">www.ucasadh.com</a>

<b>(58). Westview Day Centre (YPP)</b>	
<b>Address</b>	Westview House, 17 Audley Place, Cork
<b>Telephone:</b>	021 450 2112
<b>Fax:</b>	021 450 9877
<b>Email:</b>	<a href="mailto:aoife.mccarthy@foroige.ie">aoife.mccarthy@foroige.ie</a>
<b>Website</b>	<a href="http://www.foroige.ie">www.foroige.ie</a>

<b>(59). Wexford Centre Project (YPP)</b>	
<b>Address</b>	5/7 Upper O'Connell Street, Dublin 1
<b>Telephone:</b>	01 888 1075
<b>Fax:</b>	01 855 7207
<b>Email:</b>	<a href="mailto:wexfordcentre@eircom.net">wexfordcentre@eircom.net</a>
<b>Website</b>	

<b>(60). WHAD (YPP)</b>	
<b>Address</b>	Orchard Community Centre, Cherry Orchard Grove, Dublin 10
<b>Telephone:</b>	01 620 9160
<b>Fax:</b>	01 626 2799
<b>Email:</b>	<a href="mailto:whad@eircom.net">whad@eircom.net</a>
<b>Website</b>	

<b>(61). WRENS (YPP)</b>	
<b>Address</b>	Killinarden Enterprise Park, Killinarden, Tallaght, Dublin 24
<b>Telephone:</b>	01 466 4275
<b>Fax:</b>	01 466 4291
<b>Email:</b>	<a href="mailto:info@kdppg.ie">info@kdppg.ie</a>




**Probation Service,  
Haymarket,  
Smithfield, Dublin 7.  
Tel: + 353 (0)1 817 3600  
Fax: + 353 (0)1 872 2737**